



Extreme Log Homes, LLC  
 1820 O Rd.  
 Fruita, CO 81521  
 Phone: (970) 255-8116  
 Email: info@extloghomes.com

**Plan and Pricing Information for the Harlequin Model**

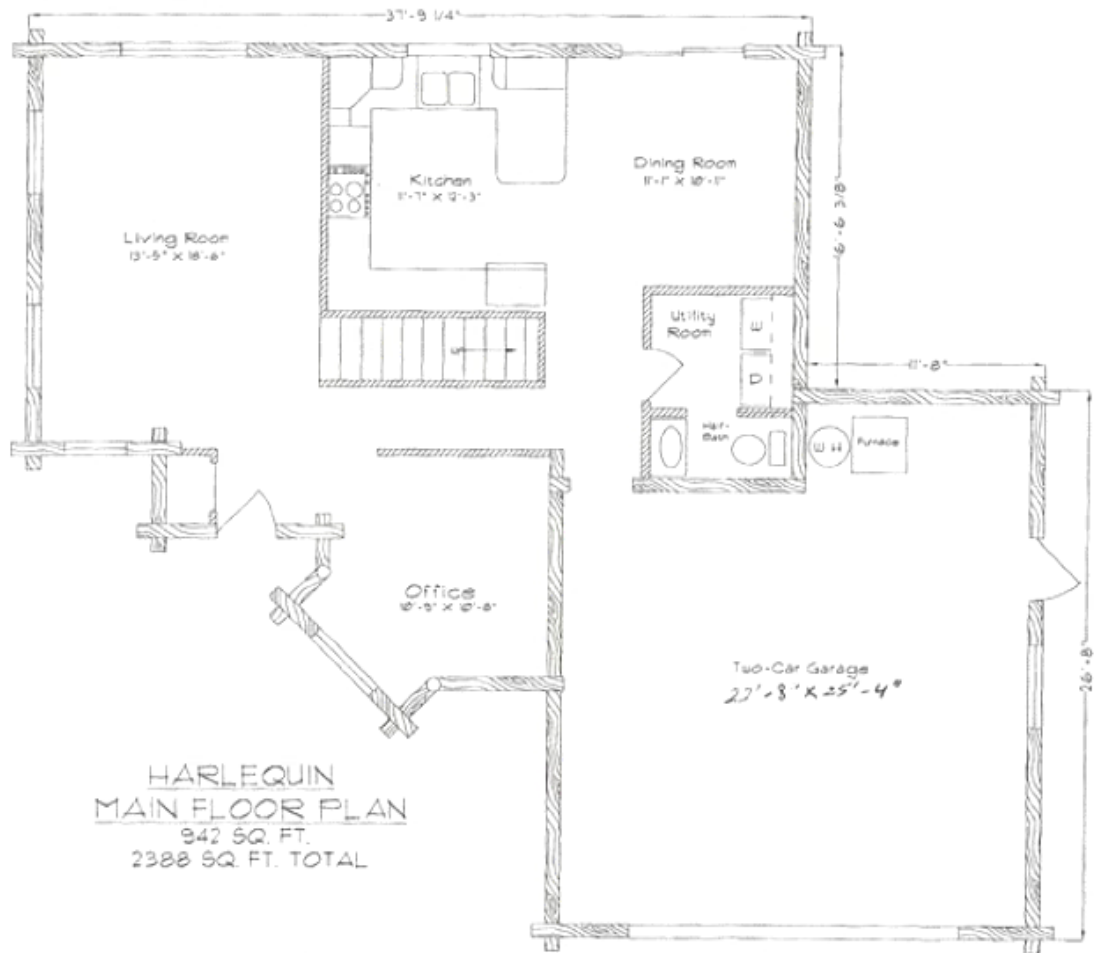


**Model Specifications**

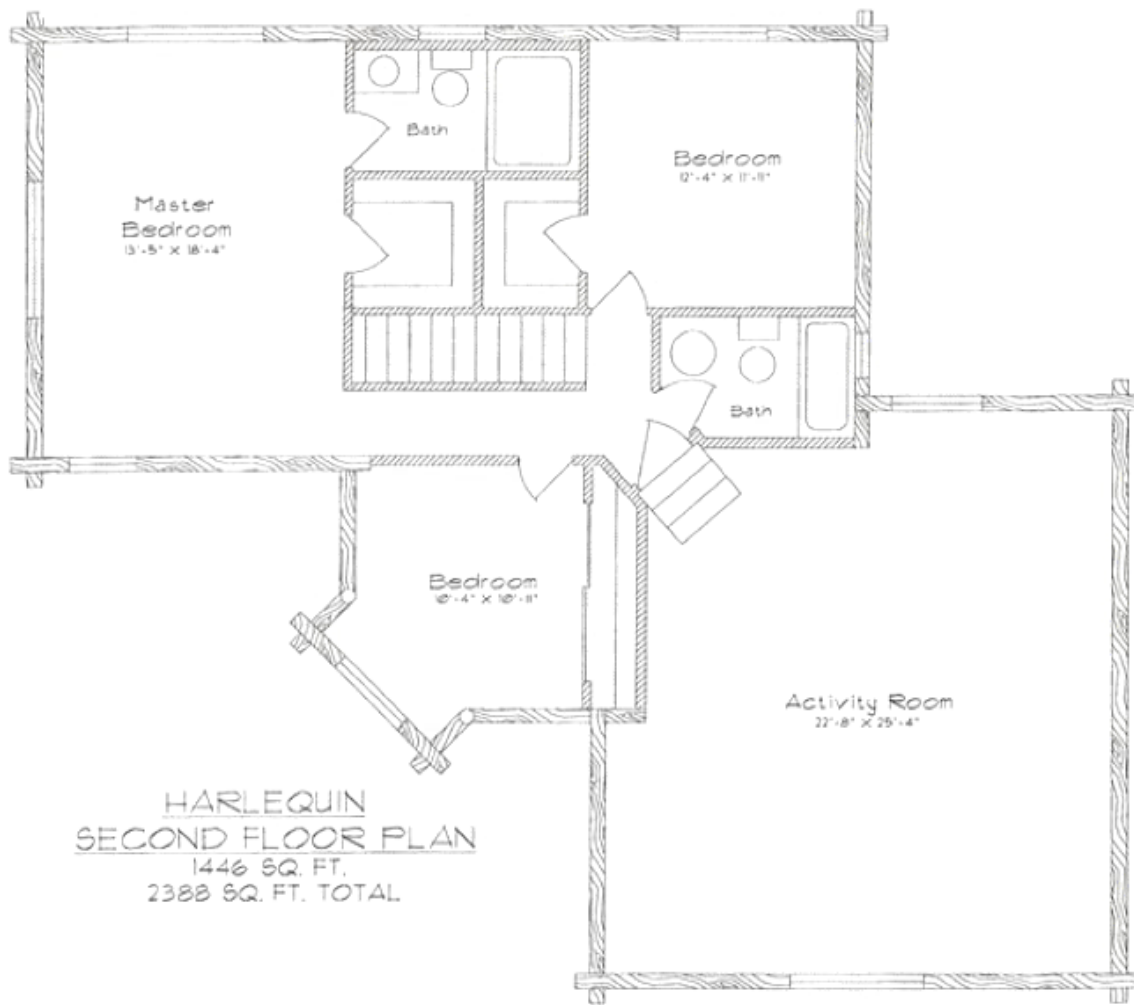
Model Name: Harlequin  
 1st Floor Sq. Ft.: 942  
 2nd Floor Sq. Ft.: 1446  
 Total Sq. Ft.: 2388  
 Bedrooms: 3  
 Bathrooms: 2.5

An innovative design for the true log home aficionado, the Harlequin contains over a mile of logs, unique angles, a master suite and an activity room above the attached garage.

Swedish Cope Style Logs					D-Style Logs	
7"	8"	9"	10"	12"	6" x 8"	8" x 8"
\$102,900.00	\$109,900.00	\$114,900.00	\$121,900.00	N/A	\$114,900.00	\$121,900.00



HARLEQUIN  
MAIN FLOOR PLAN  
 942 SQ. FT.  
 2388 SQ. FT. TOTAL



HARLEQUIN  
SECOND FLOOR PLAN  
1446 SQ. FT.  
2388 SQ. FT. TOTAL