



Extreme Log Homes, LLC  
 1820 O Rd.  
 Fruita, CO 81521  
 Phone: (970) 255-8116  
 Email: info@extloghomes.com

## Plan and Pricing Information for the Northern Harrier II Model

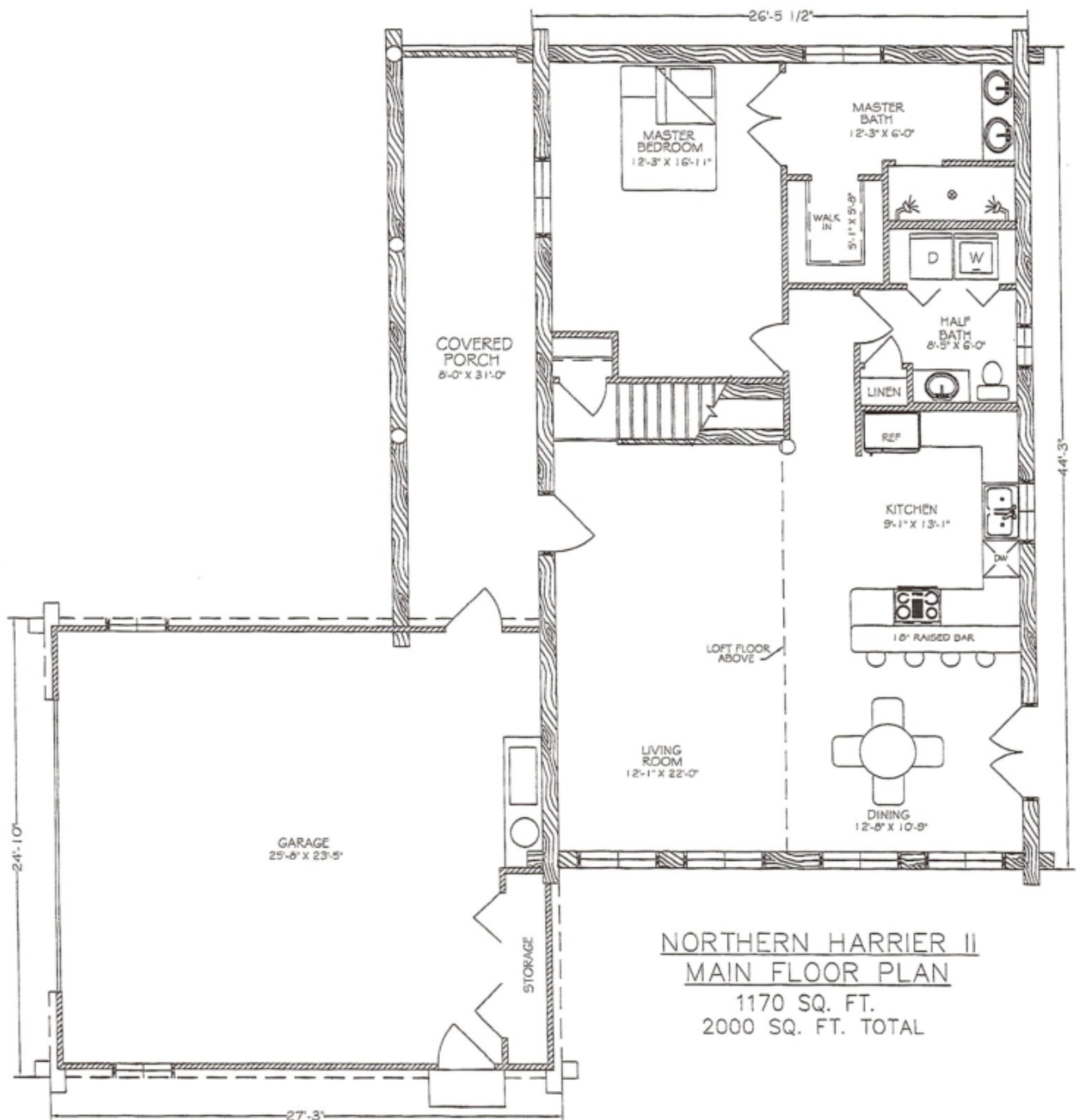


### Model Specifications

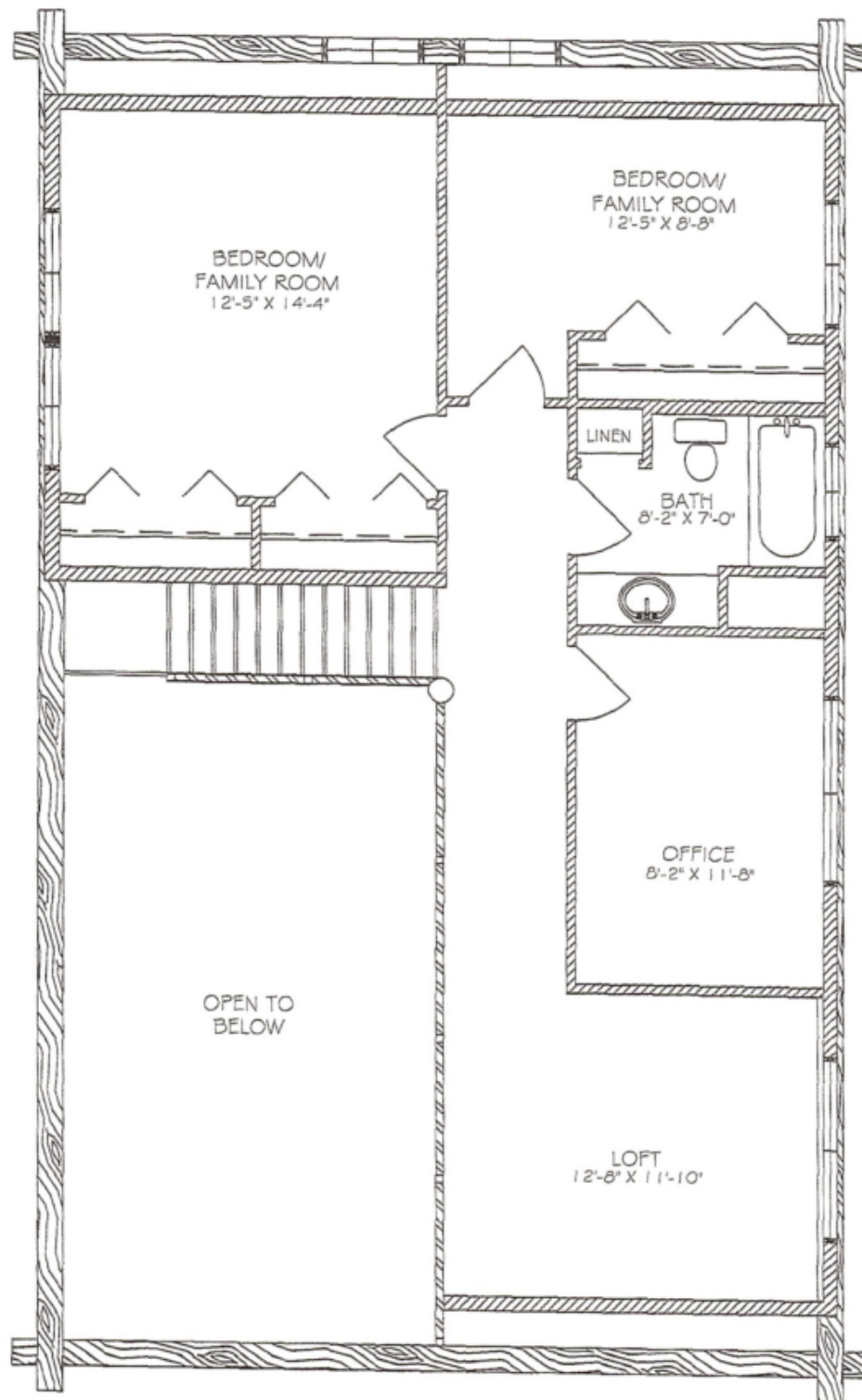
Model Name: Northern Harrier II  
 1st Floor Sq. Ft.: 1170  
 2nd Floor Sq. Ft.: 830  
 Total Sq. Ft.: 2000  
 Bedrooms: 3  
 Bathrooms: 2.5

The Northern Harrier II offers unique styling, vaulted ceilings and an open, roomy floorplan. Two upper rooms can be used as bedrooms, an office, a family room, or den without sacrificing the spacious, open loft. This beautiful home has plenty of elbow room while still maintaining the cozy cabin feel of a kicked back vacation retreat. Never short on grandeur, this home has style to spare in a 2000 square foot, two level floor plan.

Swedish Cope Style Logs					D-Style Logs	
7"	8"	9"	10"	12"	6" x 8"	8" x 8"
\$85,900.00	\$91,900.00	\$95,900.00	\$101,900.00	N/A	\$95,900.00	\$101,900.00

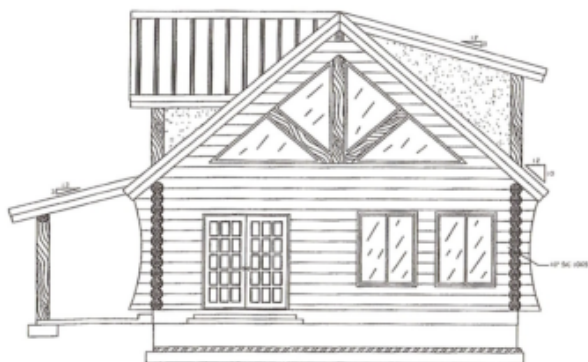


NORTHERN HARRIER II  
MAIN FLOOR PLAN  
 1170 SQ. FT.  
 2000 SQ. FT. TOTAL

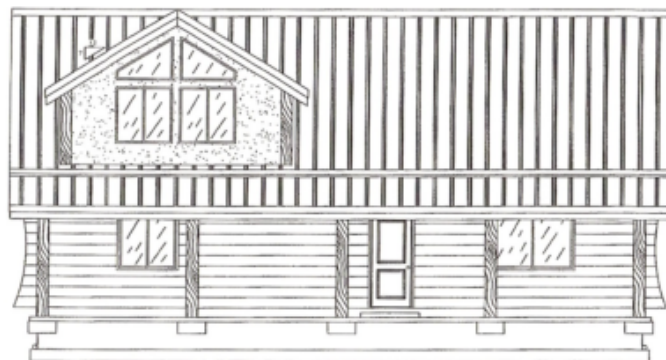


NORTHERN HARRIER II  
LOFT FLOOR PLAN

830 SQ. FT.  
 2000 SQ. FT. TOTAL

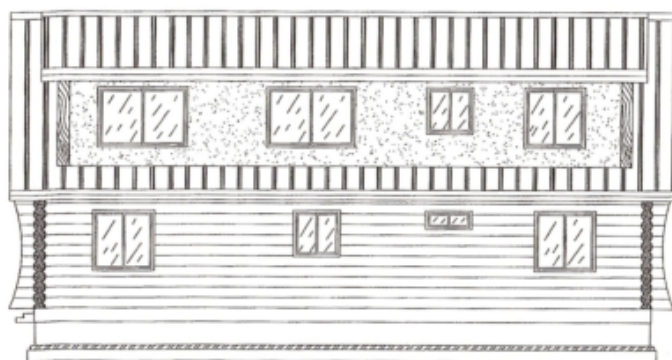


FRONT

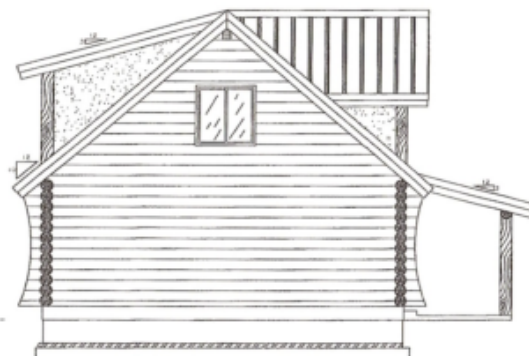


LEFT

NORTHERN HARRIER



RIGHT



REAR