



Extreme Log Homes, LLC
 1820 O Rd.
 Fruita, CO 81521
 Phone: (970) 255-8116
 Email: info@extloghomes.com

Plan and Pricing Information for the Robin II Model

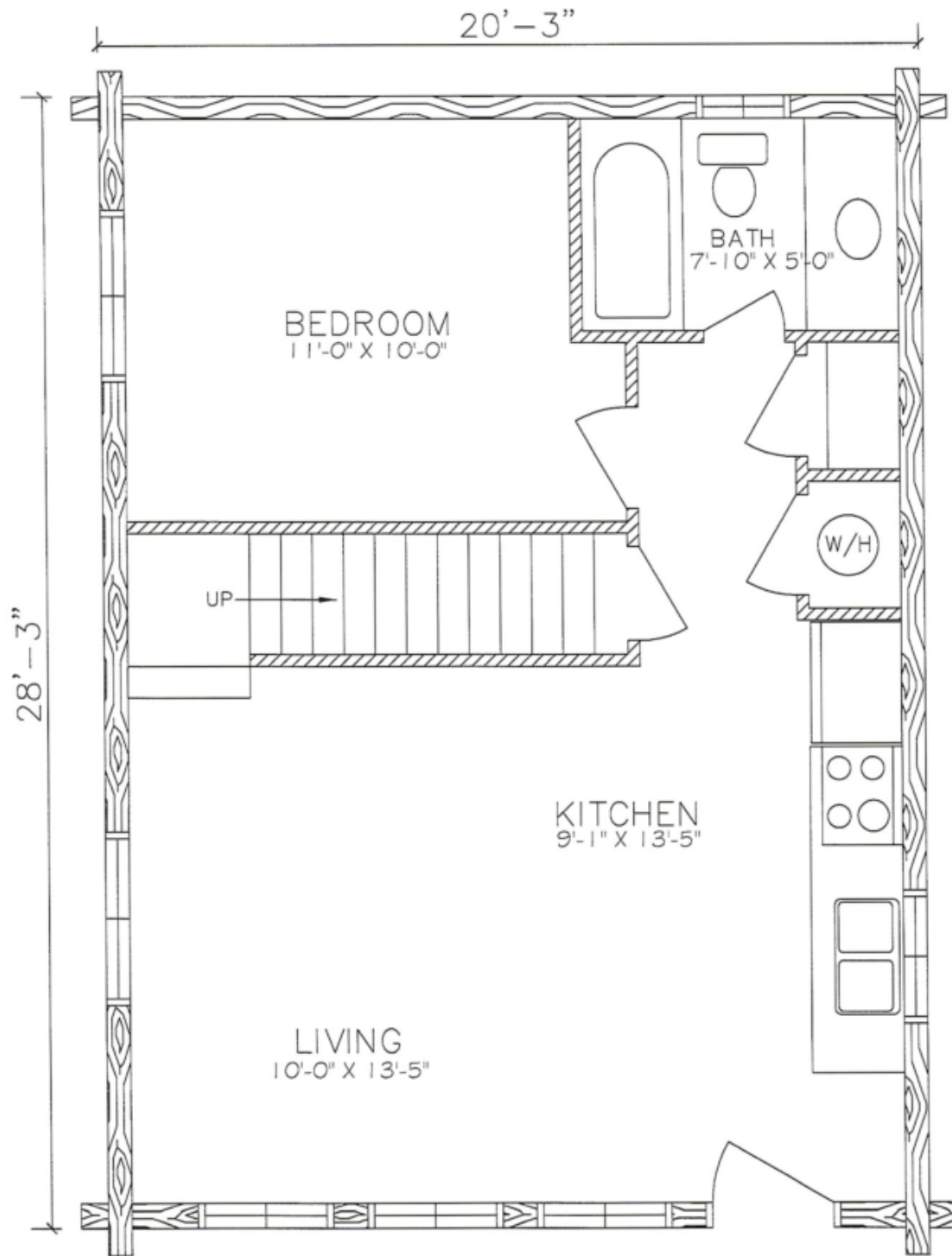


Model Specifications

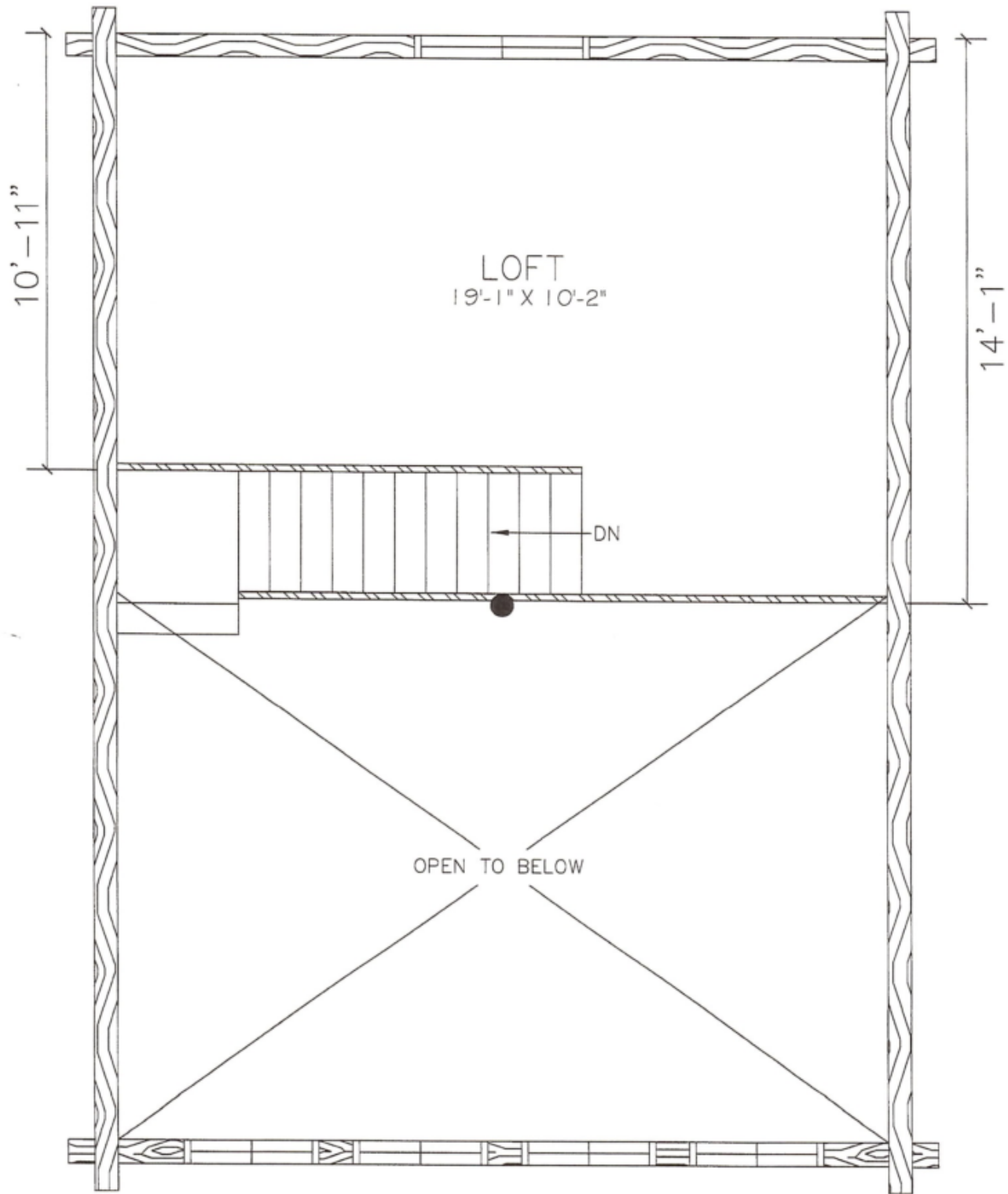
Model Name: Robin II
 1st Floor Sq. Ft.: 572
 2nd Floor Sq. Ft: 264
 Total Sq. Ft.: 836
 Bedrooms: 1
 Bathrooms: 1

Escaping to the mountains will be easy when this little cabin is waiting for you. It will fit in almost any spot, and the steeply pitched roof will keep the snow load down. There are also three floor plan options from which to choose to provide you with many different options to fit your needs.

Swedish Cope Style Logs					D-Style Logs	
7"	8"	9"	10"	12"	6" x 8"	8" x 8"
\$29,900.00	\$32,900.00	\$33,900.00	\$36,900.00	N/A	\$33,900.00	\$36,900.00



ROBIN II AND III
 MAIN FLOOR PLAN
 572 SQ. FT.



ROBIN II
LOFT PLAN
247 SQ. FT.