



Extreme Log Homes, LLC
 1820 O Rd.
 Fruita, CO 81521
 Phone: (970) 255-8116
 Email: info@extloghomes.com

Plan and Pricing Information for the Prairie Falcon Model

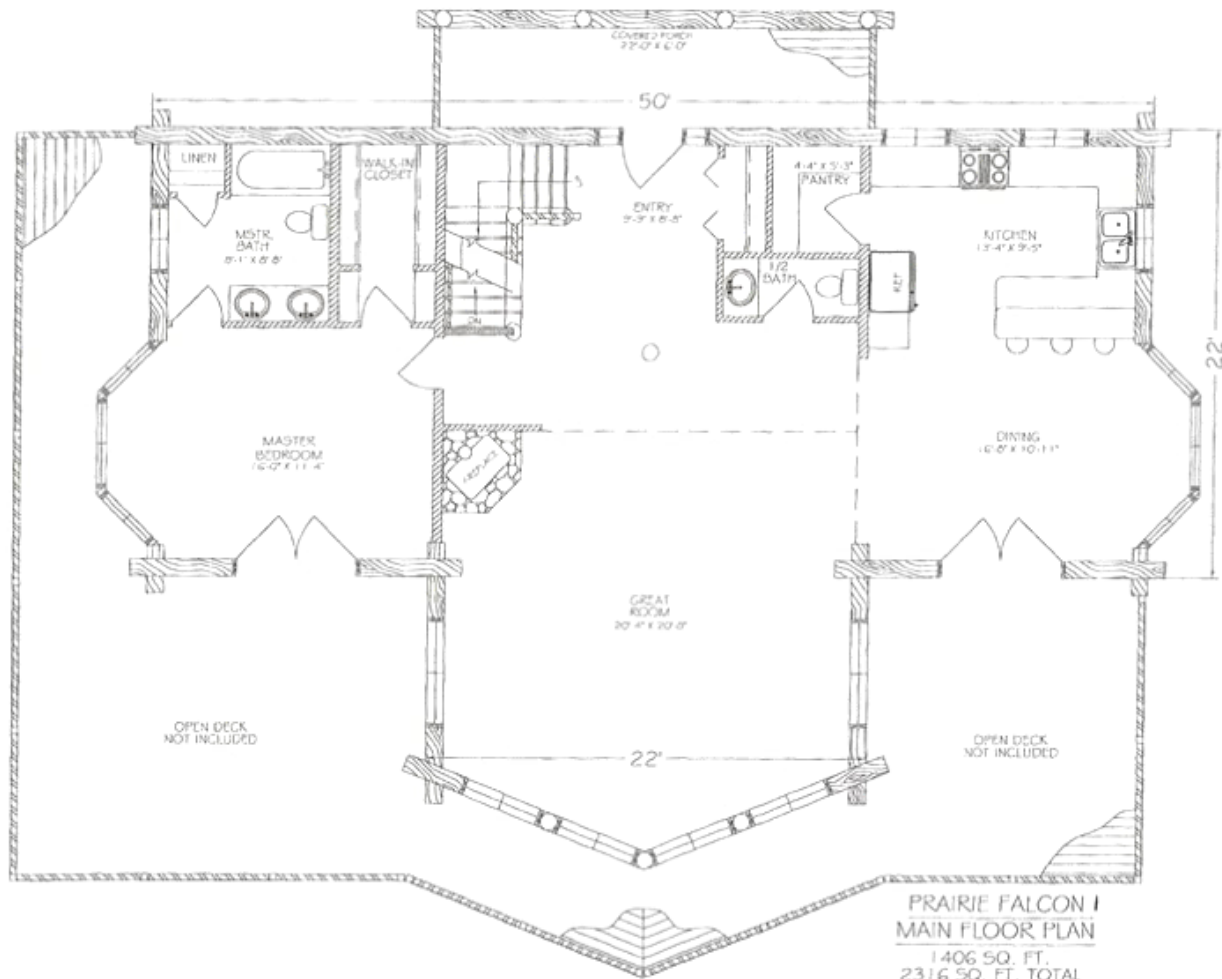


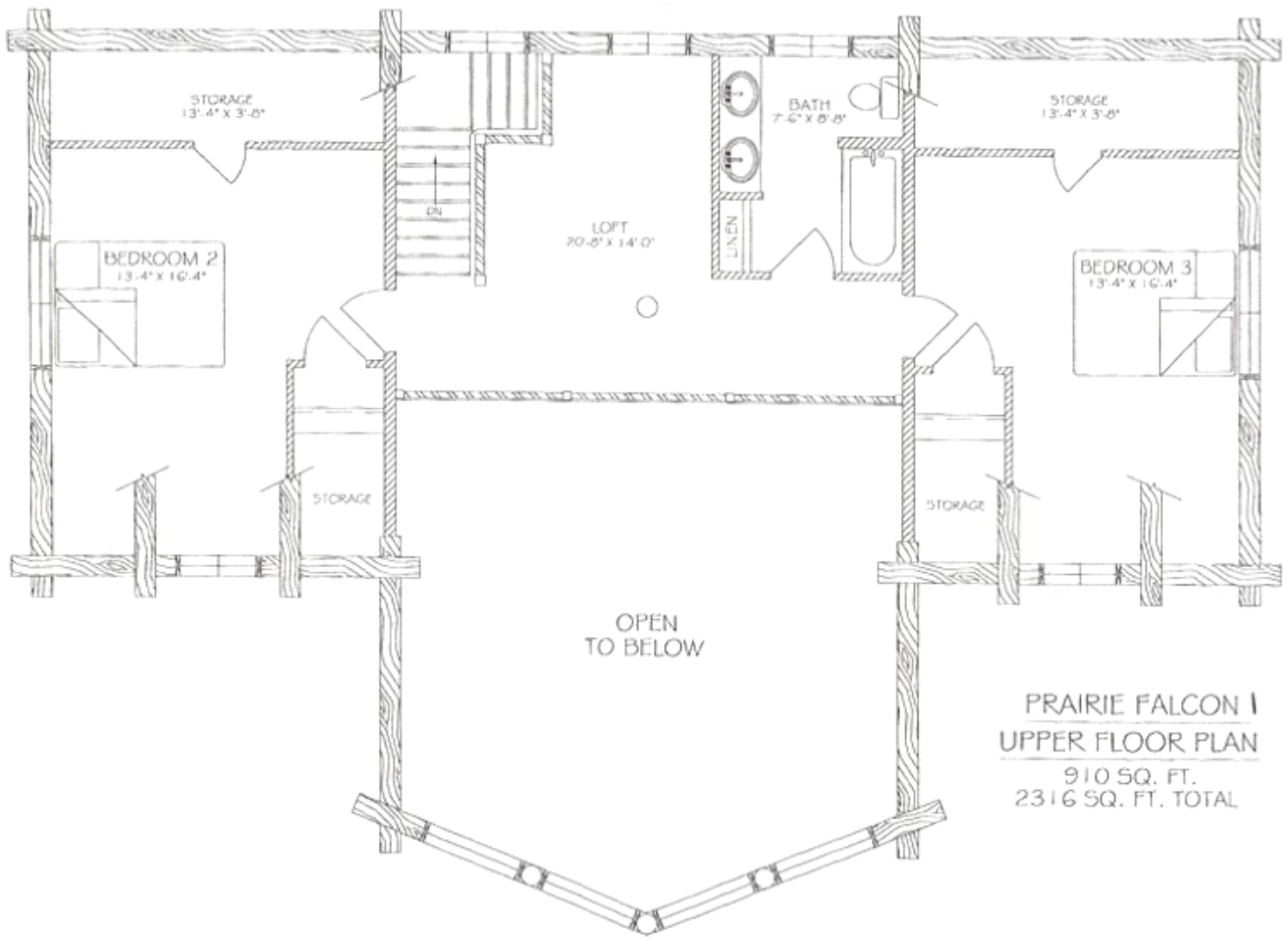
Model Specifications

Model Name: Prairie Falcon
 1st Floor Sq. Ft.: 1406
 2nd Floor Sq. Ft.: 910
 Total Sq. Ft.: 2316
 Bedrooms: 3
 Bathrooms: 2.5

The Prairie Falcon was designed to take full advantage of a grassy knoll overlooking a serene valley. The great room's high vaulted ceiling creates sky bound magnificence to only be enhanced by the large front prow. Two walls of windows enhance the view from inside, and scream curb appeal to on-lookers. The entrance is from the rear of the home, allowing full recreational use of the front deck. This will become a "welcome home"!

Swedish Cope Style Logs					D-Style Logs	
7"	8"	9"	10"	12"	6" x 8"	8" x 8"
\$96,900.00	\$103,900.00	\$108,900.00	\$115,900.00	N/A	\$108,900.00	\$115,900.00





PRAIRIE FALCON I
UPPER FLOOR PLAN
 910 SQ. FT.
 2316 SQ. FT. TOTAL