



Extreme Log Homes, LLC  
 1820 O Rd.  
 Fruita, CO 81521  
 Phone: (970) 255-8116  
 Email: info@extloghomes.com

**Plan and Pricing Information for the Mountain Quail II Model**

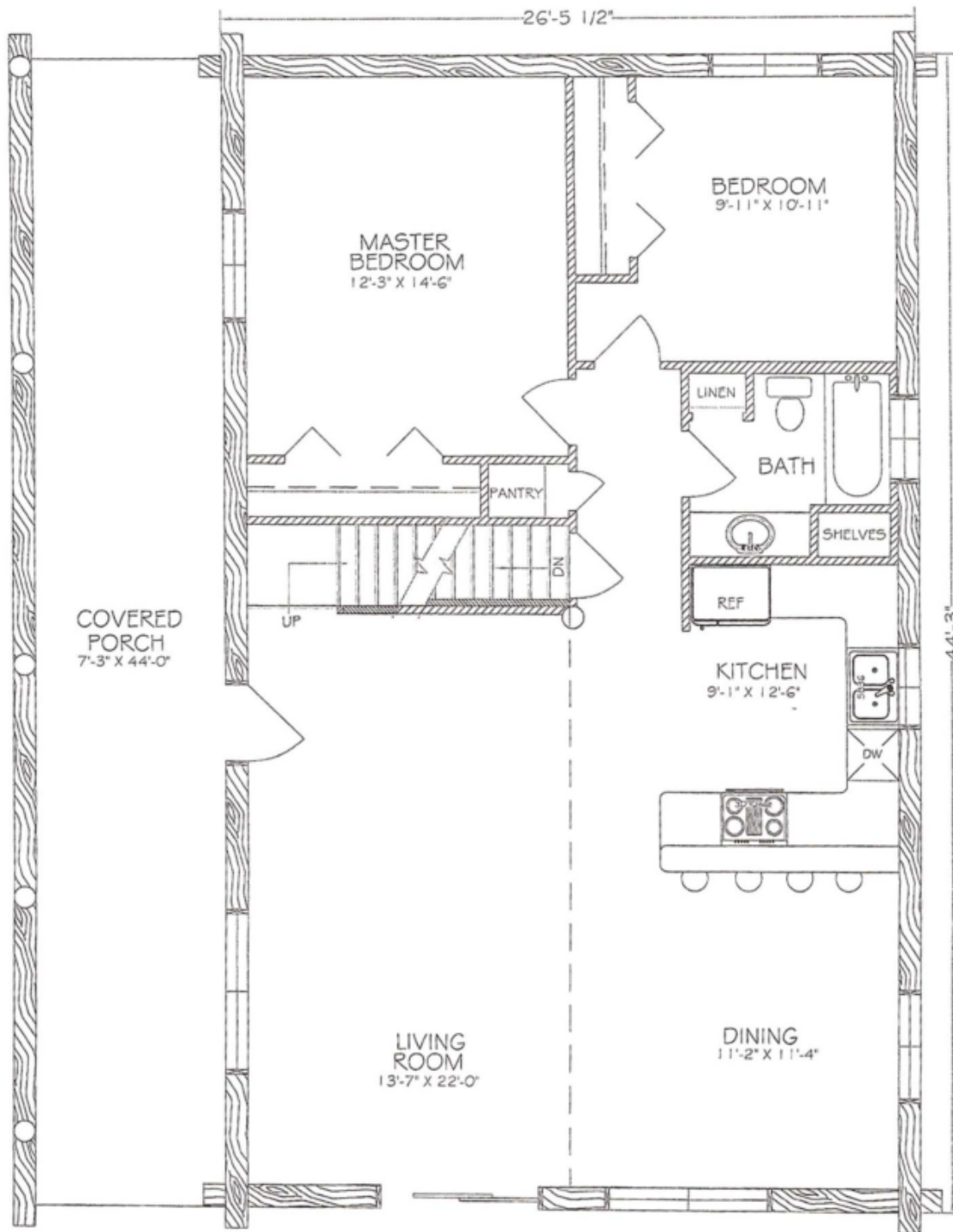


**Model Specifications**

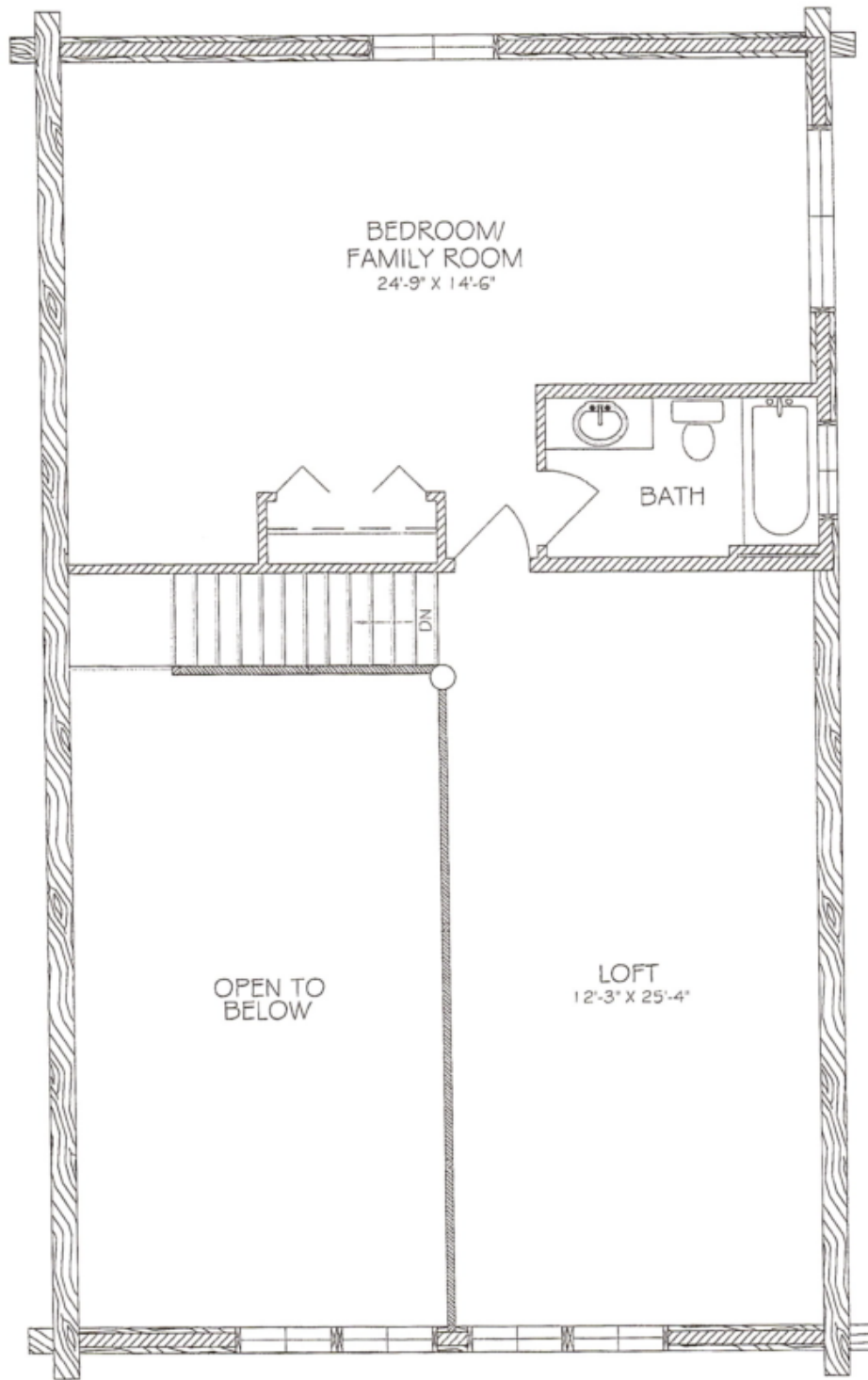
Model Name: Mountain Quail II  
 1st Floor Sq. Ft.: 1170  
 2nd Floor Sq. Ft.: 830  
 Total Sq. Ft.: 2000  
 Bedrooms: 3  
 Bathrooms: 2

All the basics for a classic cabin are here. The 7" diameter logs are more than enough for seasonal use in the mountains or full-time use in the valley. The modified A-frame roof sheds snow efficiently, and the open floor plan creates a light interior. Framed gable ends cut costs without sacrificing a functional loft.

Swedish Cope Style Logs					D-Style Logs	
7"	8"	9"	10"	12"	6" x 8"	8" x 8"
\$67,900.00	\$73,900.00	\$77,900.00	\$83,900.00	N/A	\$77,900.00	\$83,900.00



MT QUAIL II  
MAIN FLOOR PLAN  
 1170 SQ. FT.  
 2000 SQ. FT. TOTAL



MT QUAIL II  
LOFT FLOOR PLAN

830 SQ. FT.  
2000 SQ. FT. TOTAL