



Extreme Log Homes, LLC
 1820 O Rd.
 Fruita, CO 81521
 Phone: (970) 255-8116
 Email: info@extloghomes.com

Plan and Pricing Information for the Osprey I Model

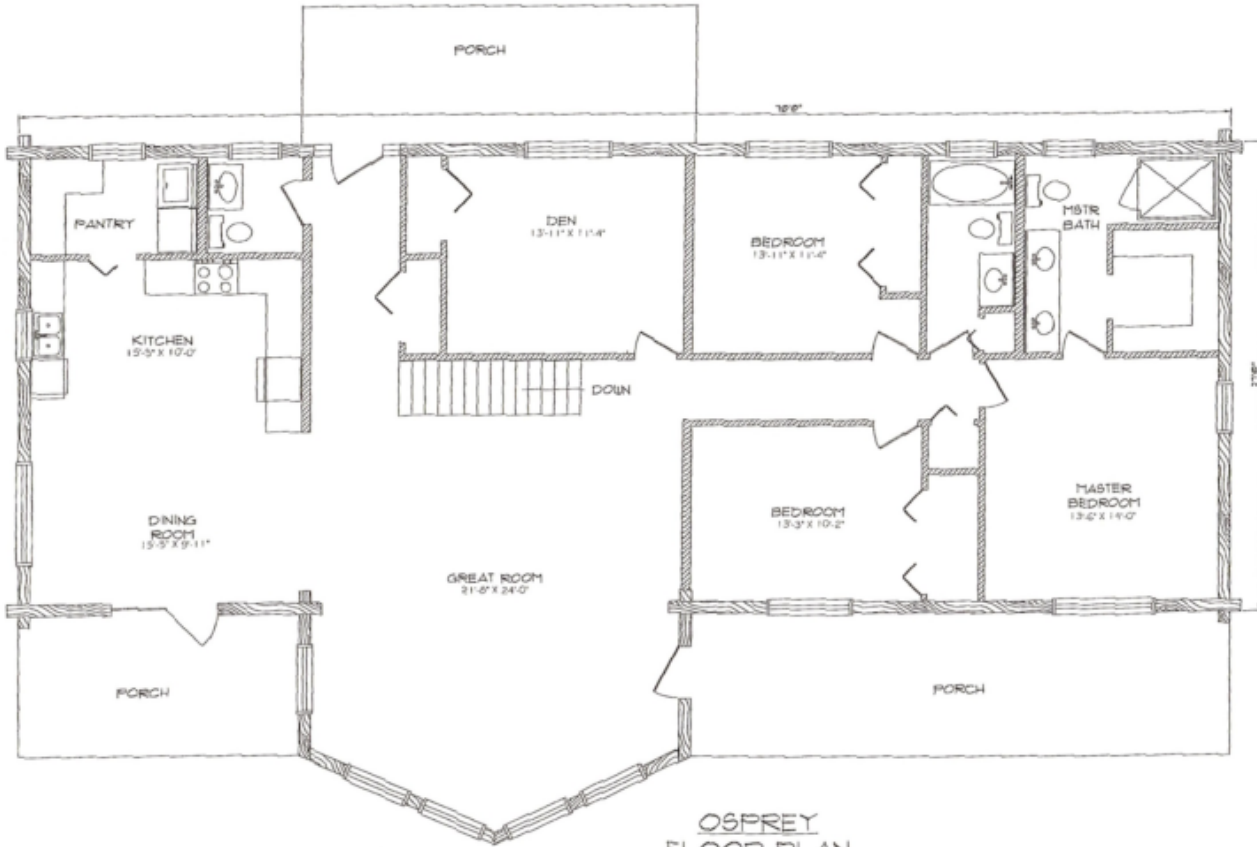


Model Specifications

Model Name: Osprey I
 1st Floor Sq. Ft.: 2138
 Total Sq. Ft.: 2138
 Bedrooms: 3
 Bathrooms: 2.5

If you have a lovely view, the Osprey I will frame it nicely within its prow of great room windows. This refined log home features a master suite, two bedrooms and a den that could be used as a guest room. When established over a daylight basement it increases significantly in size and beauty.

Swedish Cope Style Logs					D-Style Logs	
7"	8"	9"	10"	12"	6" x 8"	8" x 8"
\$85,900.00	\$91,900.00	\$95,900.00	\$102,900.00	N/A	\$95,900.00	\$102,900.00



OSPREY
 FLOOR PLAN
 2138 SQUARE FEET