



Extreme Log Homes, LLC  
 1820 O Rd.  
 Fruita, CO 81521  
 Phone: (970) 255-8116  
 Email: info@extloghomes.com

**Plan and Pricing Information for the Golden Eagle Model**

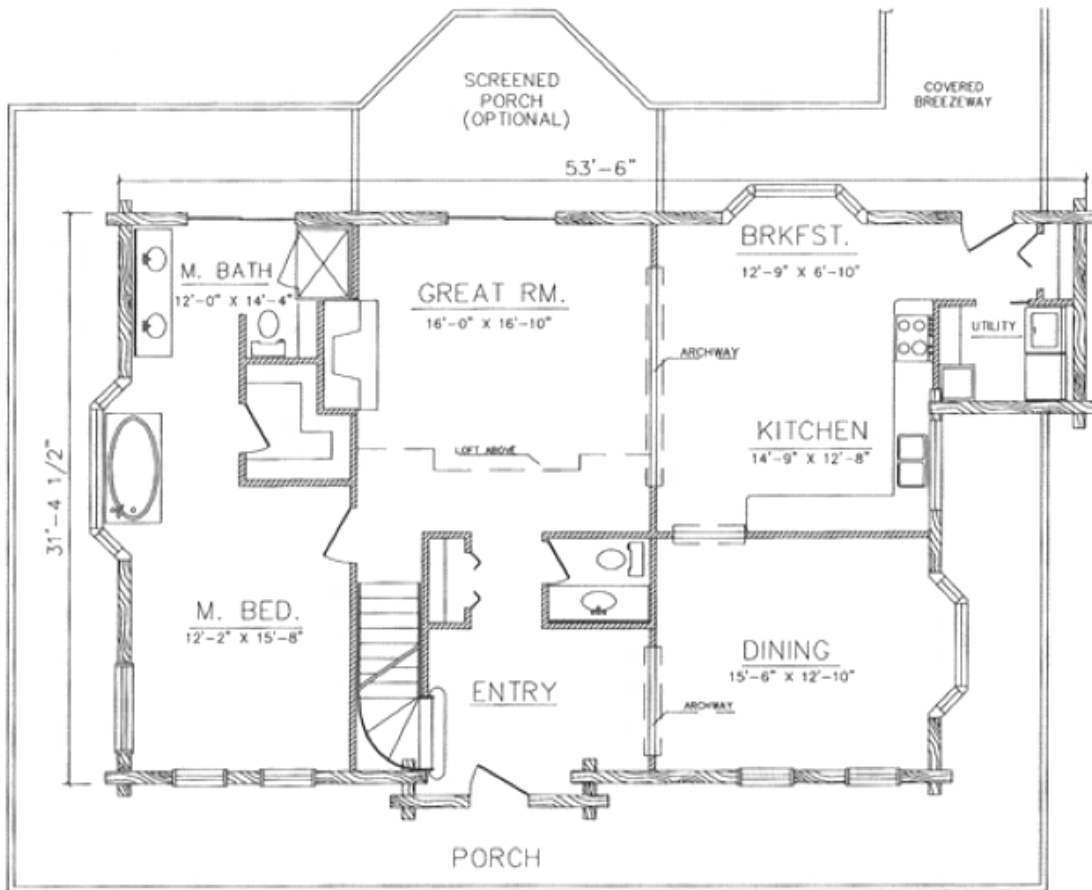


**Model Specifications**

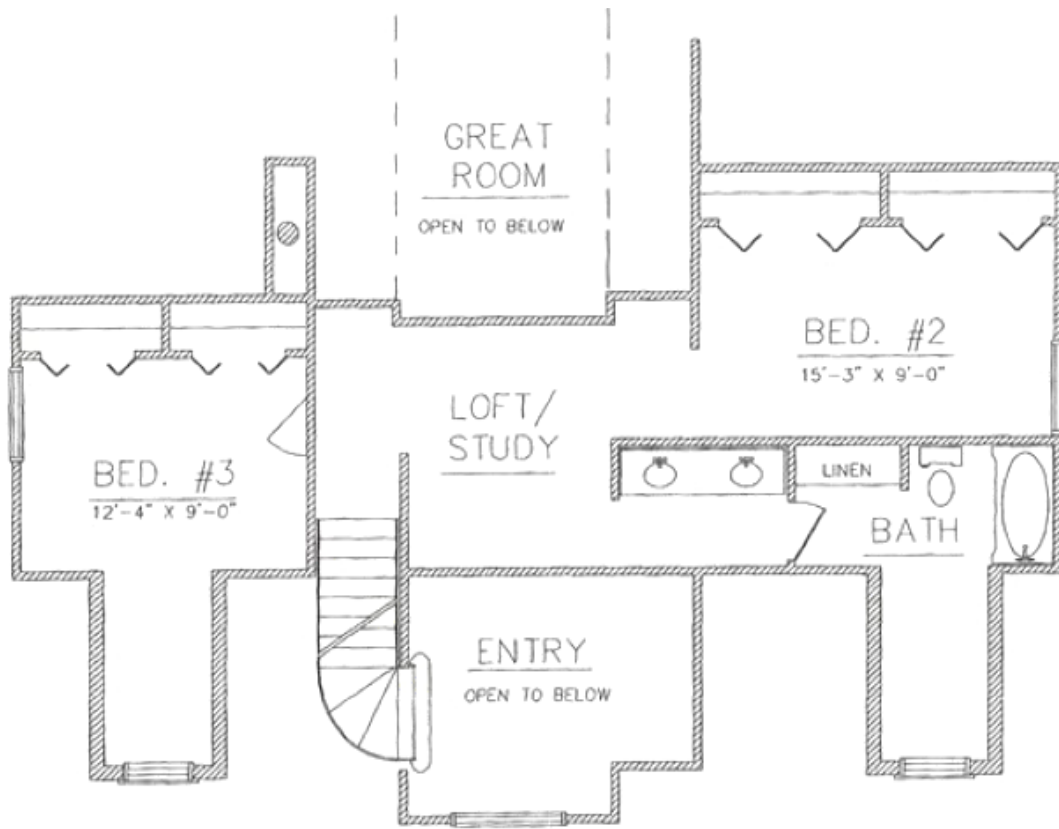
Model Name: Golden Eagle  
 1st Floor Sq. Ft.: 1562  
 2nd Floor Sq. Ft: 710  
 Total Sq. Ft.: 2272  
 Bedrooms: 3  
 Bathrooms: 2.5

Wrap-around porches, archways and a unique floor plan combine to make the Golden Eagle a majestic, western log home. It has the traditional great room, master suite, two upstairs bedrooms, one and a half bathrooms, and a breakfast nook, along with a formal dining room. An optional garage could also be built with a bonus room above it.

Swedish Cope Style Logs					D-Style Logs	
7"	8"	9"	10"	12"	6" x 8"	8" x 8"
\$94,900.00	\$101,900.00	\$106,900.00	\$113,900.00	N/A	\$106,900.00	\$113,900.00



GOLDEN EAGLE  
 MAIN FLOOR PLAN  
 1562 SQUARE FEET  
 2272 SQ. FT. TOTAL



GOLDEN EAGLE  
SECOND FLOOR PLAN

710 SQUARE FEET  
2272 SQ. FT. TOTAL



GOLDEN EAGLE  
FRONT ELEVATION



GOLDEN EAGLE  
RIGHT ELEVATION



GOLDEN EAGLE  
LEFT ELEVATION



GOLDEN EAGLE  
REAR ELEVATION