



Extreme Log Homes, LLC
 1820 O Rd.
 Fruita, CO 81521
 Phone: (970) 255-8116
 Email: info@extloghomes.com

Plan and Pricing Information for the Condor Model

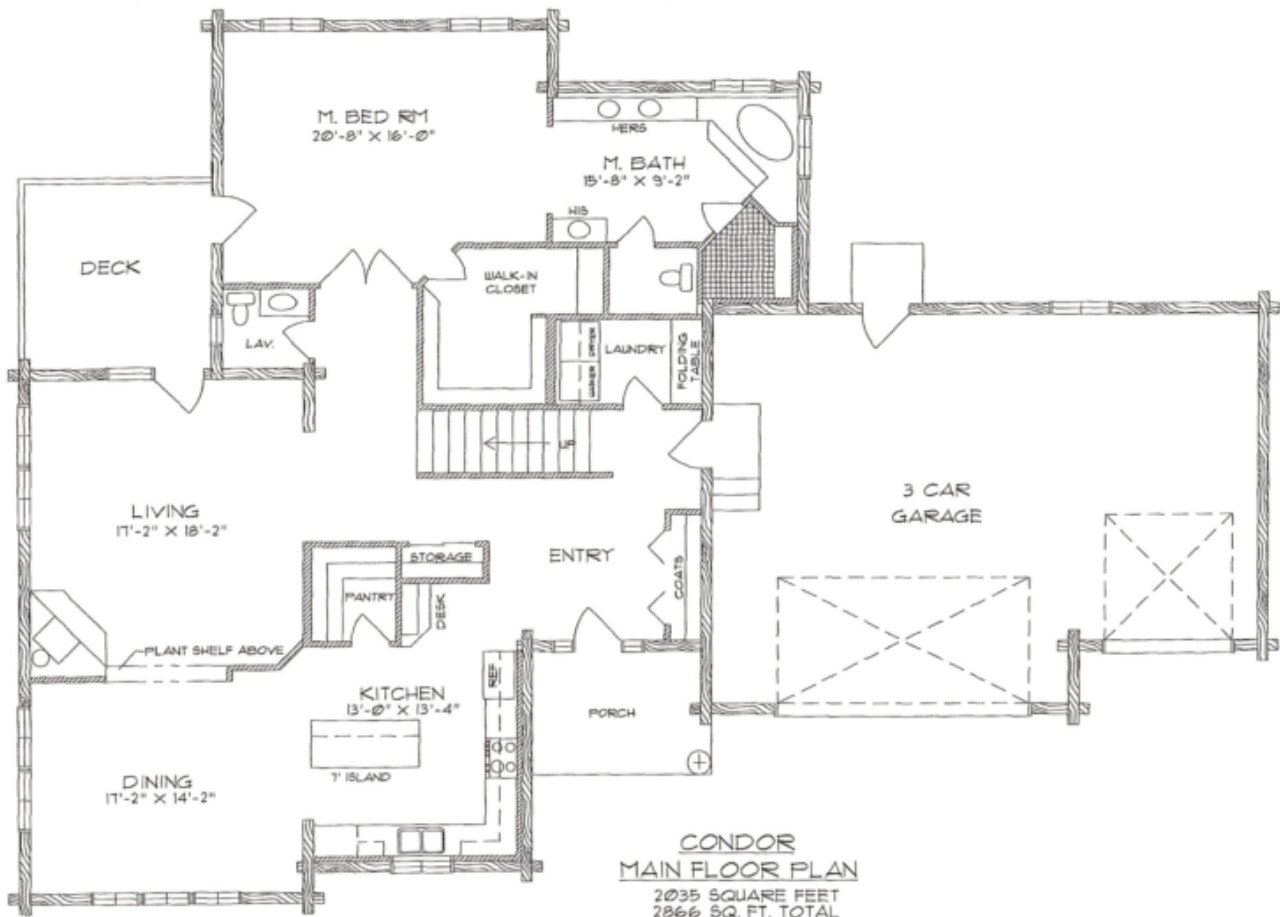


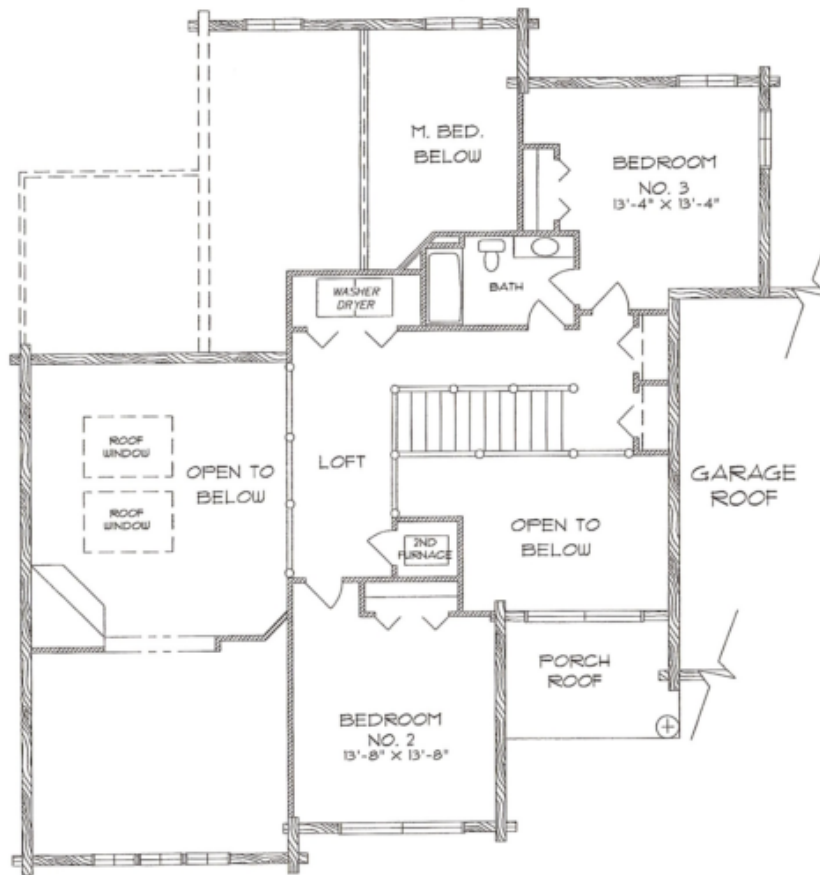
Model Specifications

Model Name: Condor
 1st Floor Sq. Ft.: 2035
 2nd Floor Sq. Ft.: 831
 Total Sq. Ft.: 2866
 Bedrooms: 3
 Bathrooms: 2.5

The Condor is a magnificently large log home. It is designed to be built over a basement foundation that can be left partially above ground for a walk-out option. Exterior stonework on the lower level compliments the logs beautifully. There are five bedrooms, a formal dining area, game room, attached garage and storage galore.

Swedish Cope Style Logs					D-Style Logs	
7"	8"	9"	10"	12"	6" x 8"	8" x 8"
\$122,900.00	\$131,900.00	\$137,900.00	\$145,900.00	N/A	\$137,900.00	\$145,900.00





CONDOR
 SECOND FLOOR PLAN
 831 SQUARE FEET
 2866 SQ. FT. TOTAL