



Extreme Log Homes, LLC  
 1820 O Rd.  
 Fruita, CO 81521  
 Phone: (970) 255-8116  
 Email: info@extloghomes.com

**Plan and Pricing Information for the Goldfinch II Model**

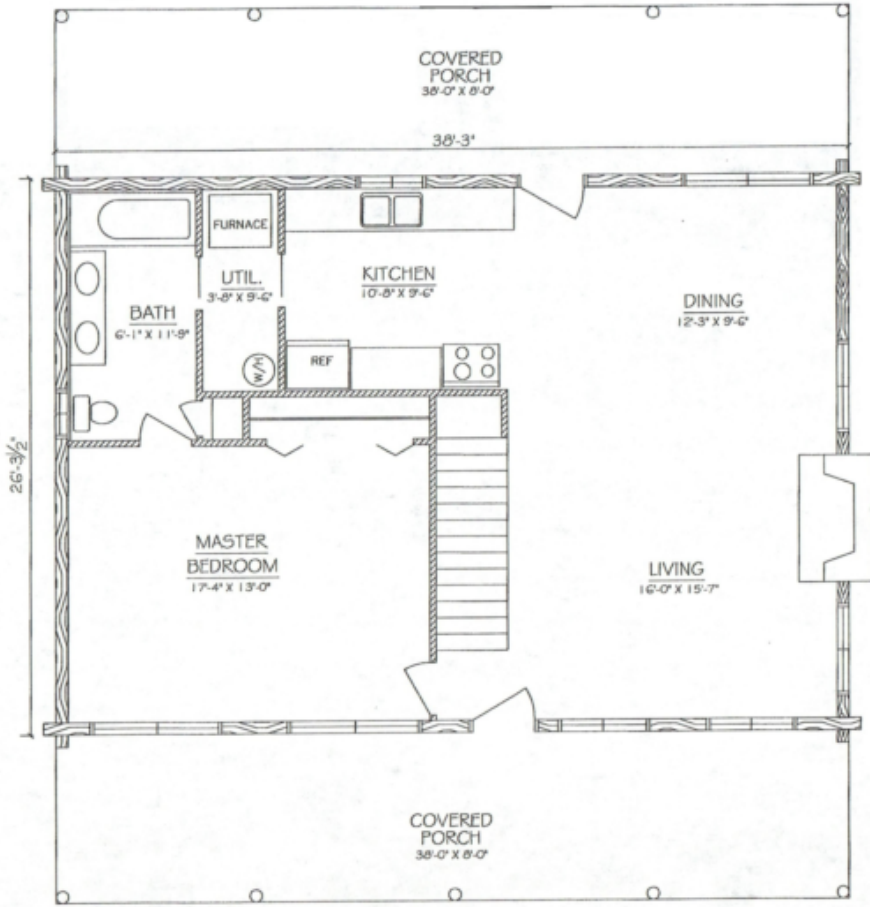


**Model Specifications**

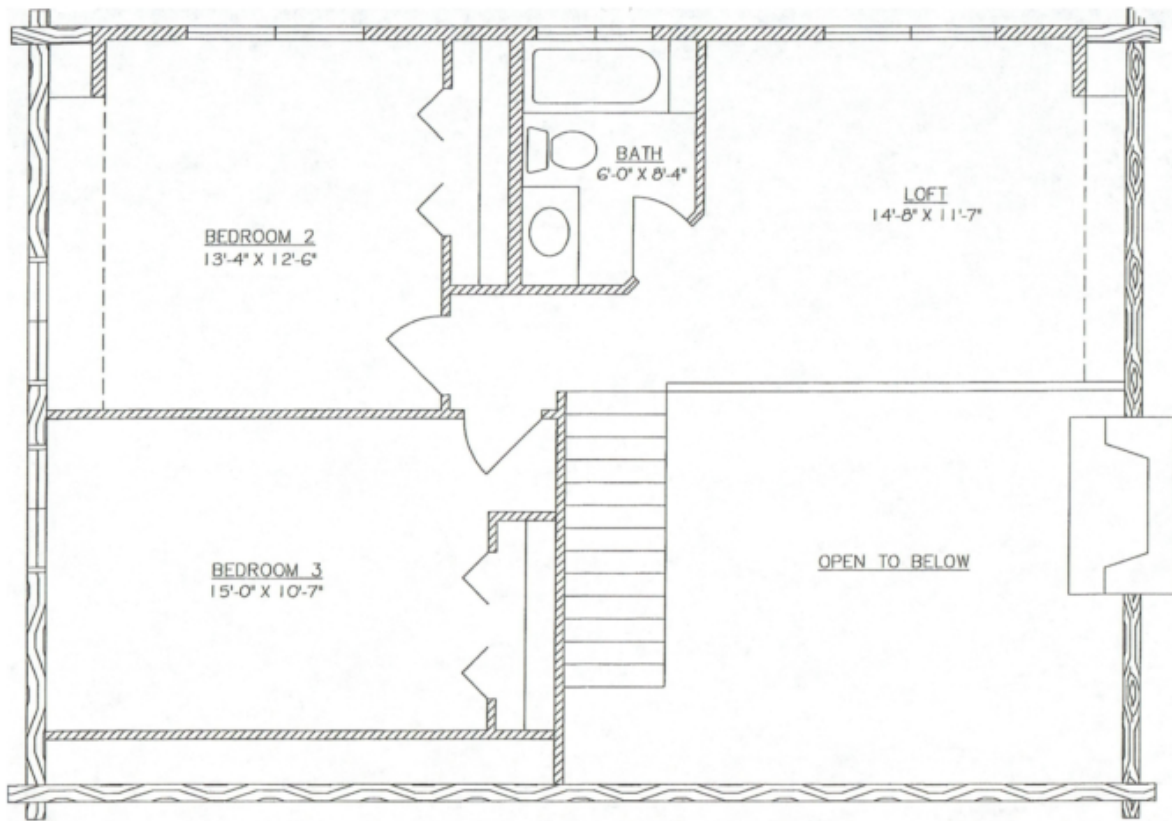
Model Name: Goldfinch II  
 1st Floor Sq. Ft.: 1006  
 2nd Floor Sq. Ft.: 728  
 Total Sq. Ft.: 1734  
 Bedrooms: 2  
 Bathrooms: 2

An innovative design for the true log home aficionado, Goldfinch II contains over a mile of logs, unique angles, a master suite and an activity room above the attached garage.

Swedish Cope Style Logs					D-Style Logs	
7"	8"	9"	10"	12"	6" x 8"	8" x 8"
\$72,900.00	\$77,900.00	\$80,900.00	\$86,900.00	N/A	\$80,900.00	\$86,900.00



GOLDFINCH II  
 MAIN FLOOR PLAN  
 1006 SQ. FT.  
 1734 SQ. FT. TOTAL



GOLDFINCH II  
LOFT FLOOR PLAN  
728 SQ. FT.  
1734 SQ. FT. TOTAL