



Extreme Log Homes, LLC
 1820 O Rd.
 Fruita, CO 81521
 Phone: (970) 255-8116
 Email: info@extloghomes.com

Plan and Pricing Information for the Saw-Whet Owl Model

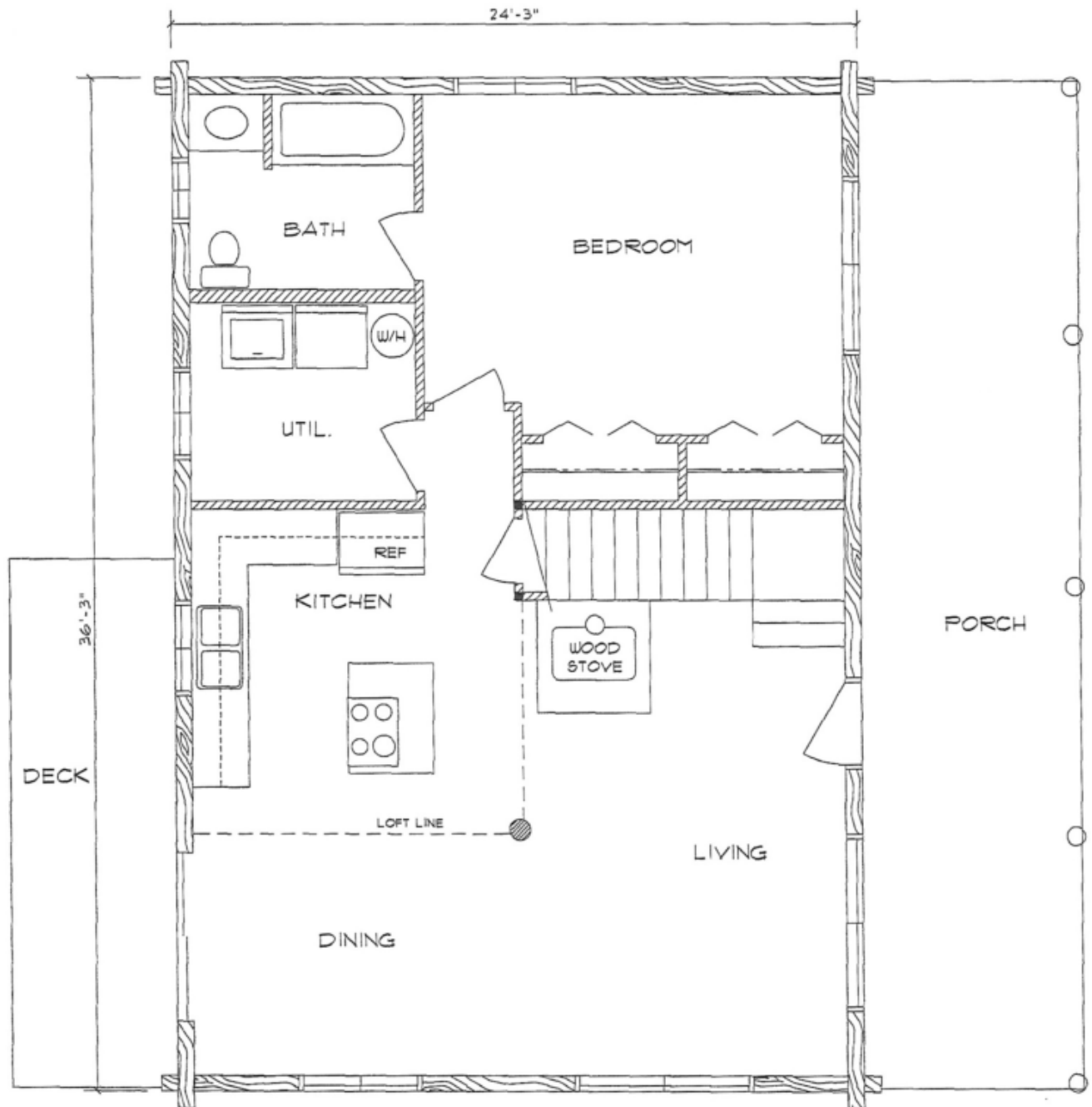


Model Specifications

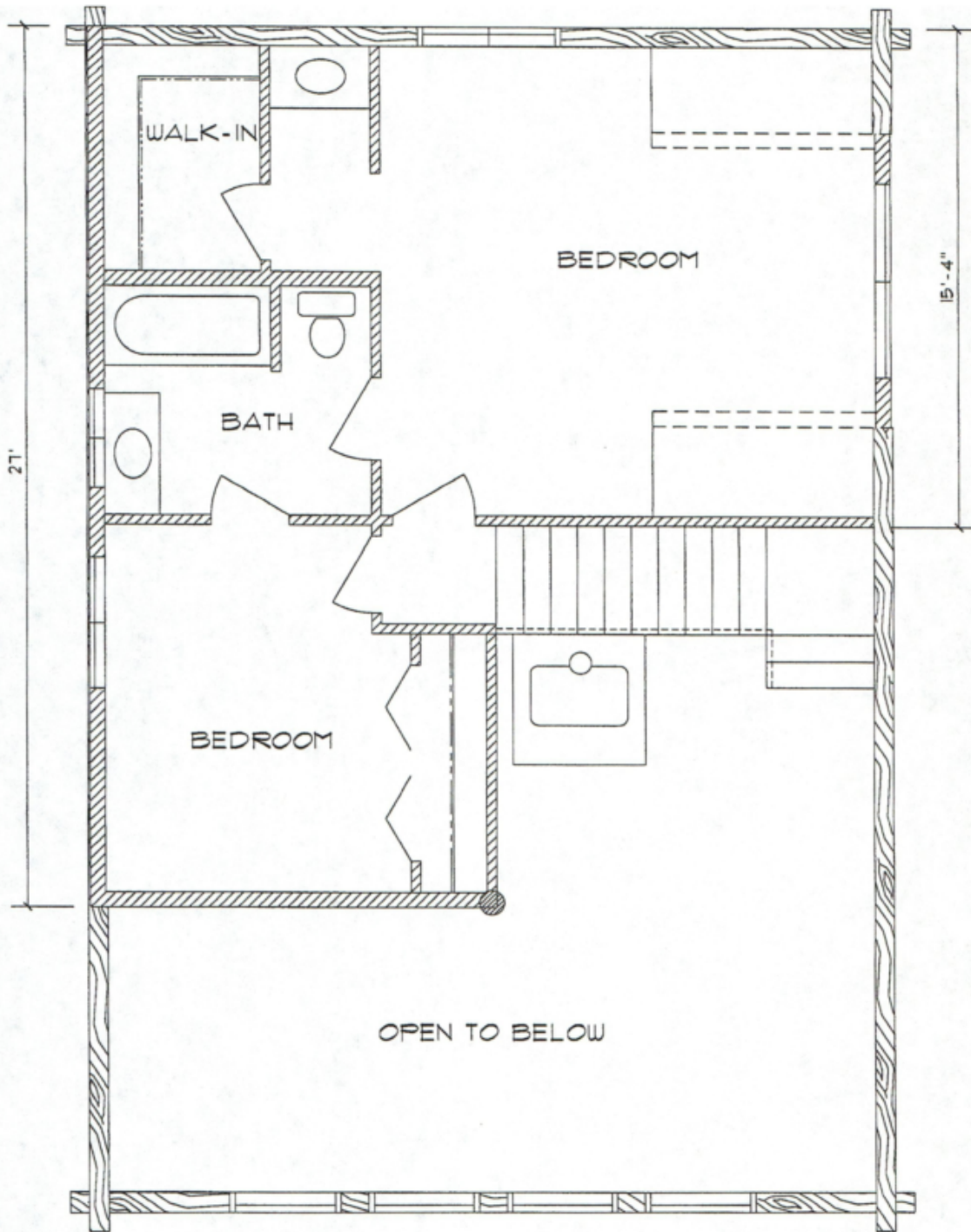
Model Name: Saw-Whet Owl
 1st Floor Sq. Ft.: 879
 2nd Floor Sq. Ft.: 515
 Total Sq. Ft.: 1394
 Bedrooms: 3
 Bathrooms: 2

Our Saw-Whet Owl design has a nice western, board-walk-style porch along with a vaulted great room. The dining area is nestled under the loft-line to create a more intimate space. The Saw-Whet Owl has three bedrooms, two baths, a utility room and walk-in closet.

Swedish Cope Style Logs					D-Style Logs	
7"	8"	9"	10"	12"	6" x 8"	8" x 8"
\$58,900.00	\$62,900.00	\$65,900.00	\$69,900.00	N/A	\$65,900.00	\$69,900.00



SAW-WHET OWL
MAIN FLOOR PLAN
879 SQ. FT.
1394 SQ. FT. TOTAL



SAW-WHET OWL
LOFT FLOOR PLAN
515 SQ. FT.
1394 SQ. FT. TOTAL