



Extreme Log Homes, LLC
 1820 O Rd.
 Fruita, CO 81521
 Phone: (970) 255-8116
 Email: info@extloghomes.com

Plan and Pricing Information for the Arctic Tern Model

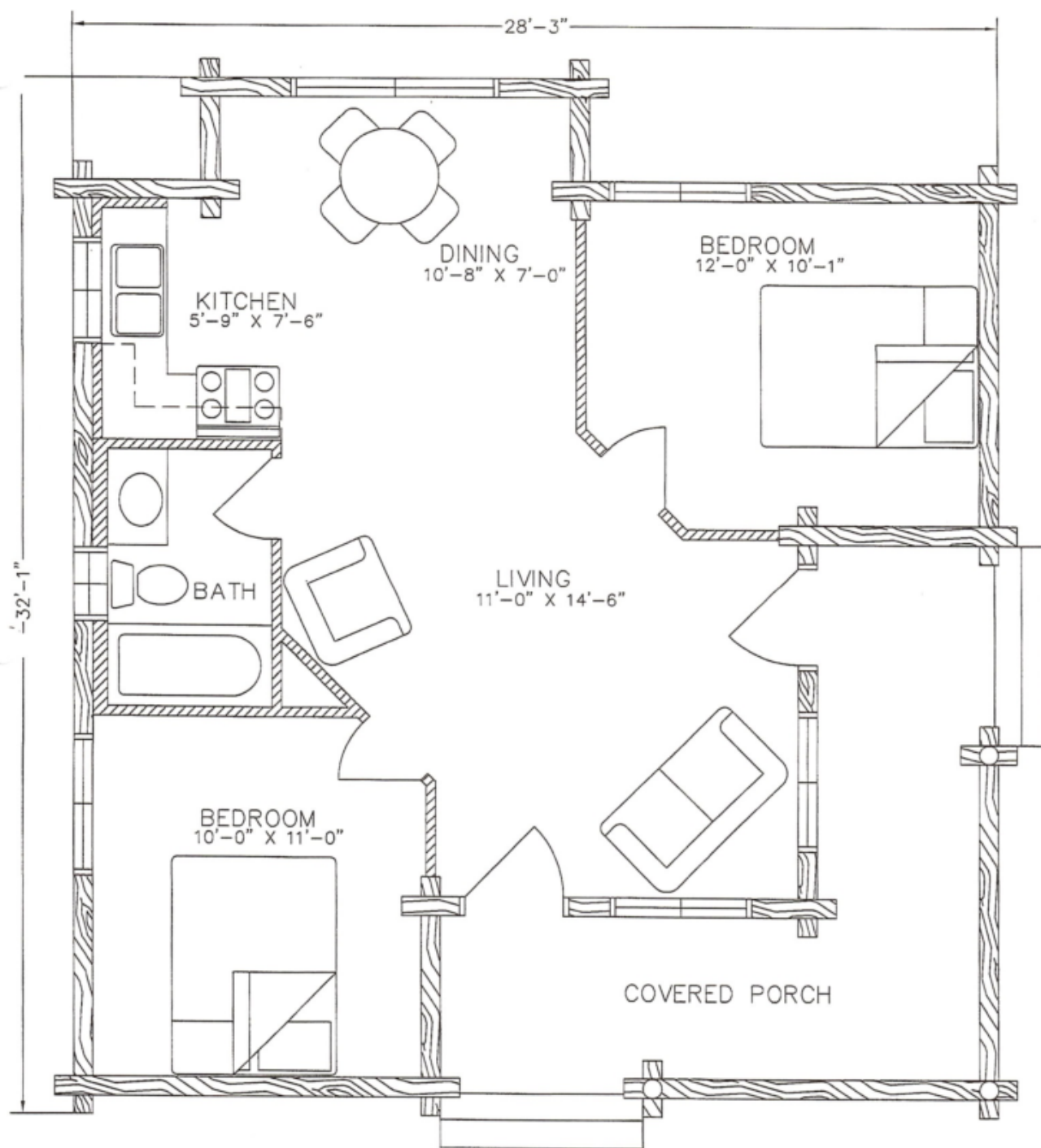


Model Specifications

Model Name: Arctic Tern
 1st Floor Sq. Ft.: 677
 Total Sq. Ft.: 677
 Bedrooms: 2
 Bathrooms: 1

The dramatic roof line and high vaulted ceiling give the Arctic Tern a spacious and elegant feeling. This modified A-frame is perfect for a mountain setting. It efficiently sheds heavy snows while allowing plenty of light into the living area. Additionally, the covered porch provides a sheltered place to take in the view.

Swedish Cope Style Logs					D-Style Logs	
7"	8"	9"	10"	12"	6" x 8"	8" x 8"
\$28,900.00	\$30,900.00	\$32,900.00	\$34,900.00	N/A	\$32,900.00	\$34,900.00

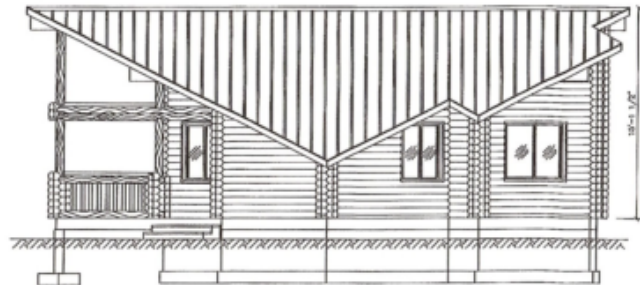


ARCTIC TERN I
677 SQ. FT.



FRONT ELEVATION

THE ARCTIC TERN I



RIGHT ELEVATION



LEFT ELEVATION



REAR ELEVATION