



Extreme Log Homes, LLC  
 1820 O Rd.  
 Fruita, CO 81521  
 Phone: (970) 255-8116  
 Email: info@extloghomes.com

**Plan and Pricing Information for the Goldfinch I Model**

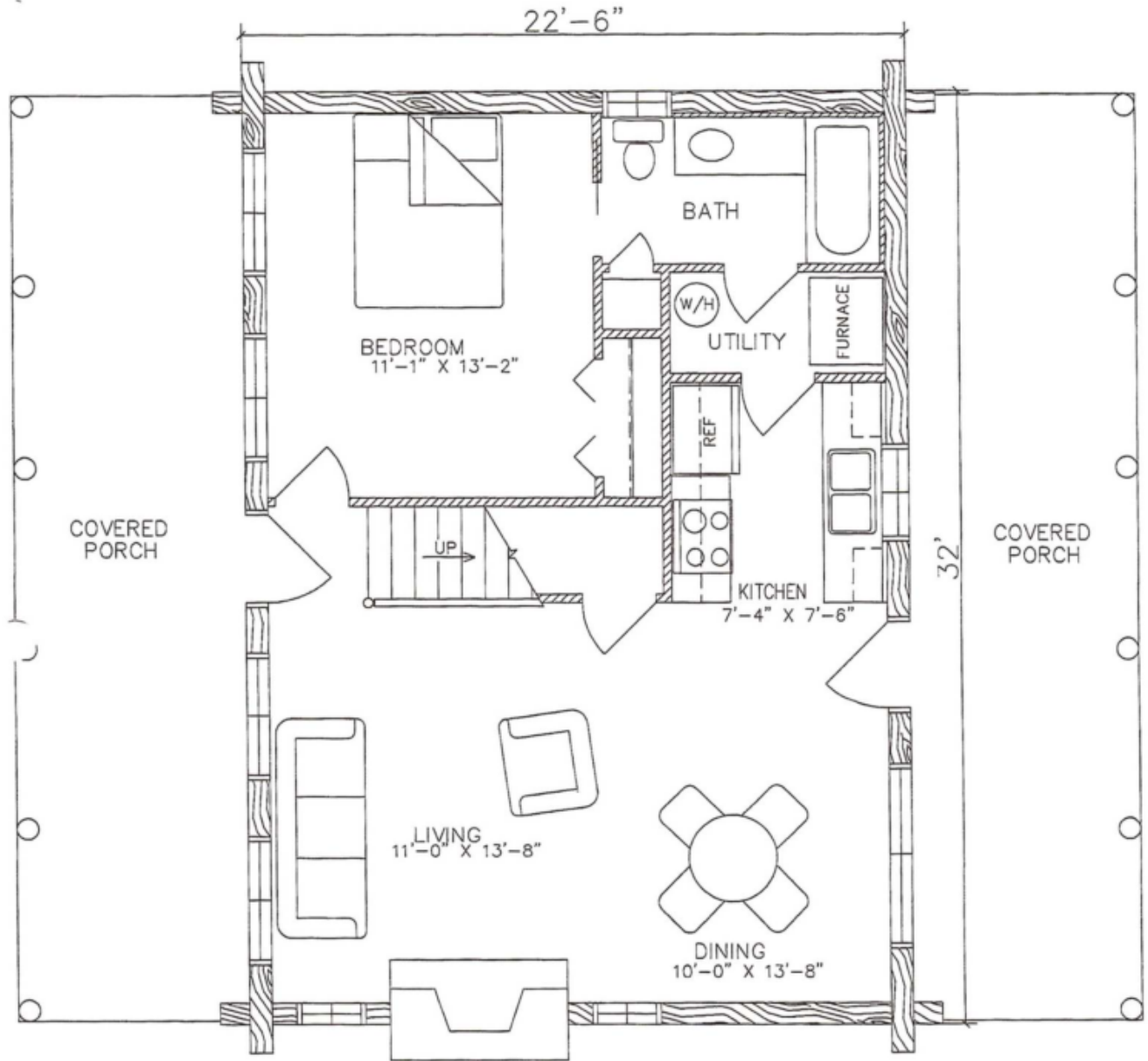


**Model Specifications**

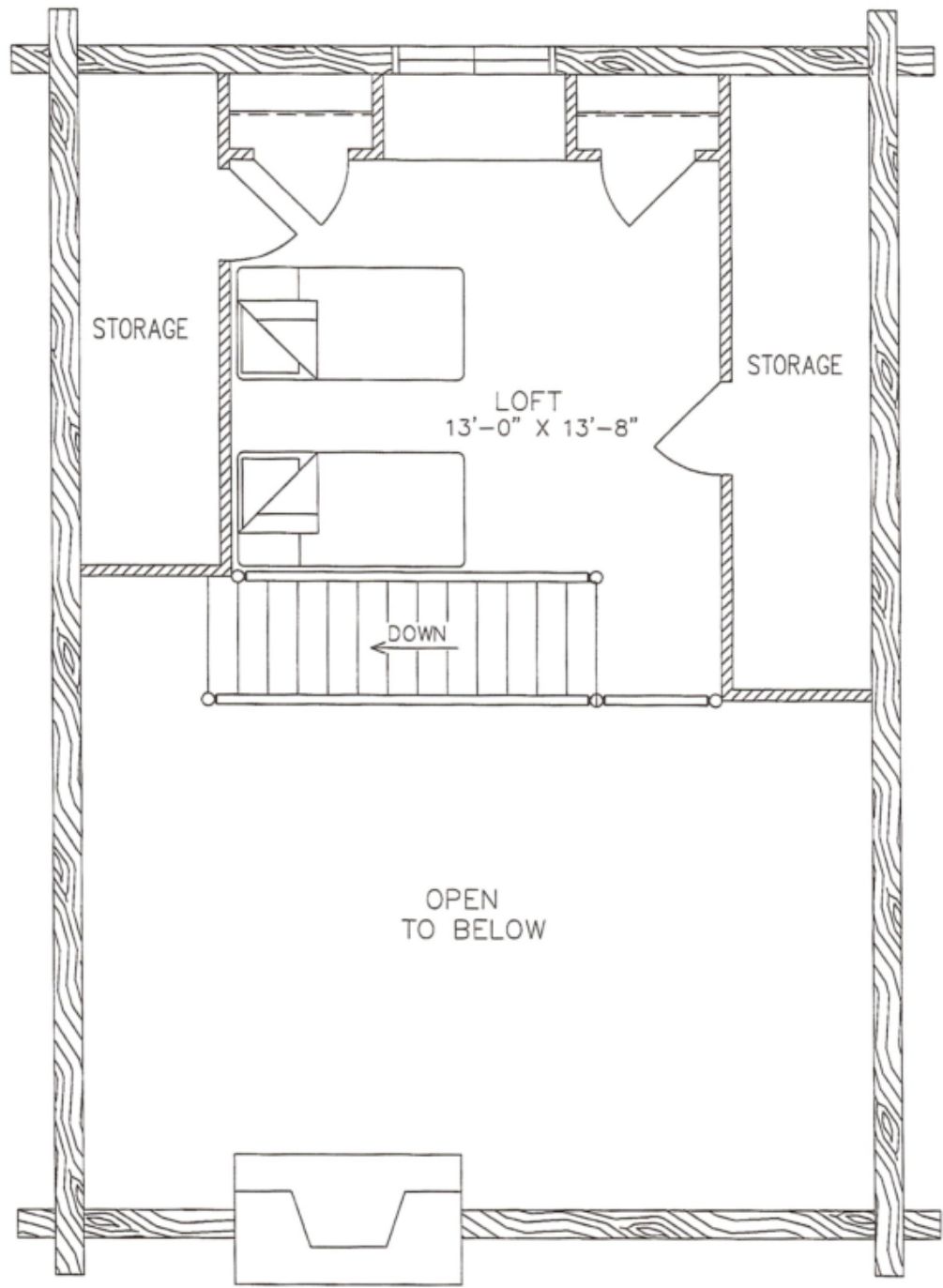
Model Name: Goldfinch I  
 1st Floor Sq. Ft.: 720  
 2nd Floor Sq. Ft.: 347  
 Total Sq. Ft.: 1067  
 Bedrooms: 2  
 Bathrooms: 1

Supremacy in miniature, the Goldfinch I possesses everything desirable in a vacation setting. It has covered porches, both front and back, a galley kitchen, an open family room, a bedroom, a bath downstairs along with a sleeping loft upstairs that comes with lots of closet space for all of the outdoor gear.

Swedish Cope Style Logs					D-Style Logs	
7"	8"	9"	10"	12"	6" x 8"	8" x 8"
\$40,900.00	\$43,900.00	\$45,900.00	\$48,900.00	N/A	\$45,900.00	\$48,900.00



GOLDFINCH  
MAIN FLOOR  
 720 SQ. FT.  
 917 SQ. FT. TOTAL LIVING



GOLDFINCH  
LOFT FLOOR

197 SQ. FT.

917 SQ. FT. TOTAL LIVING

150 SQ. FT. STORAGE