



Extreme Log Homes, LLC
 1820 O Rd.
 Fruita, CO 81521
 Phone: (970) 255-8116
 Email: info@extloghomes.com

Plan and Pricing Information for the Great Horned Owl Model

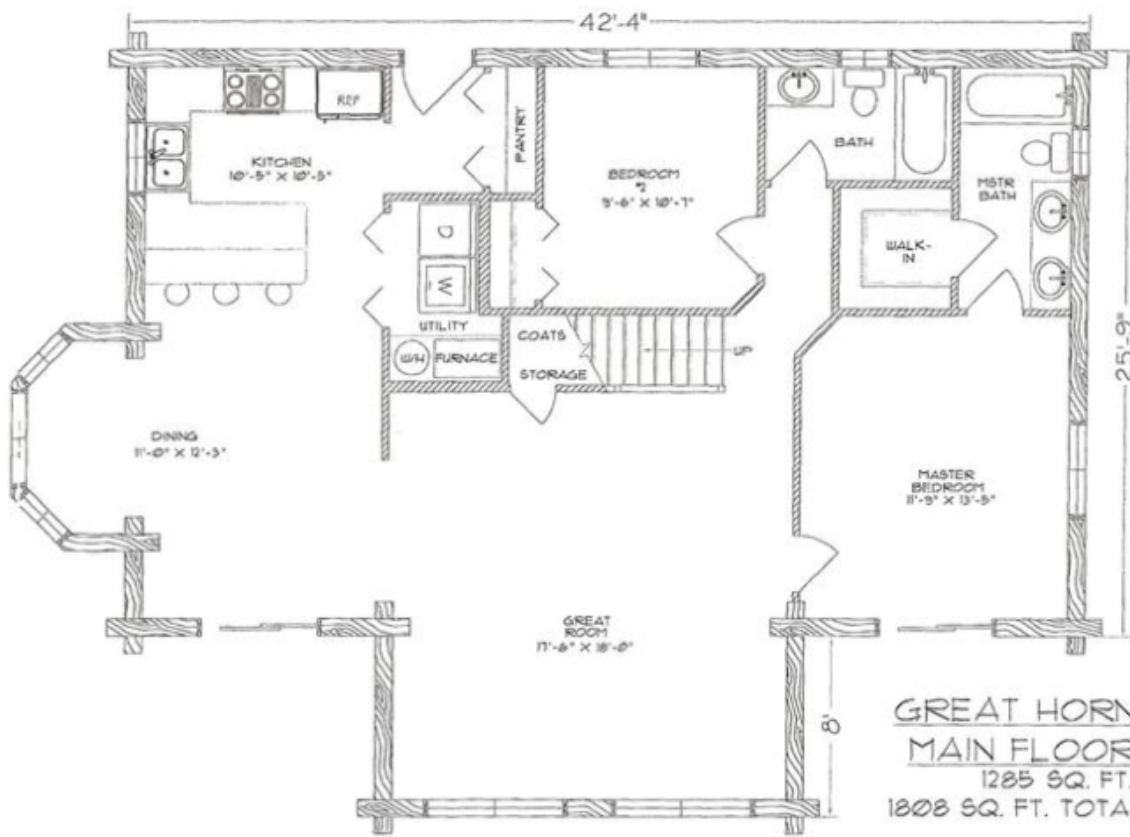


Model Specifications

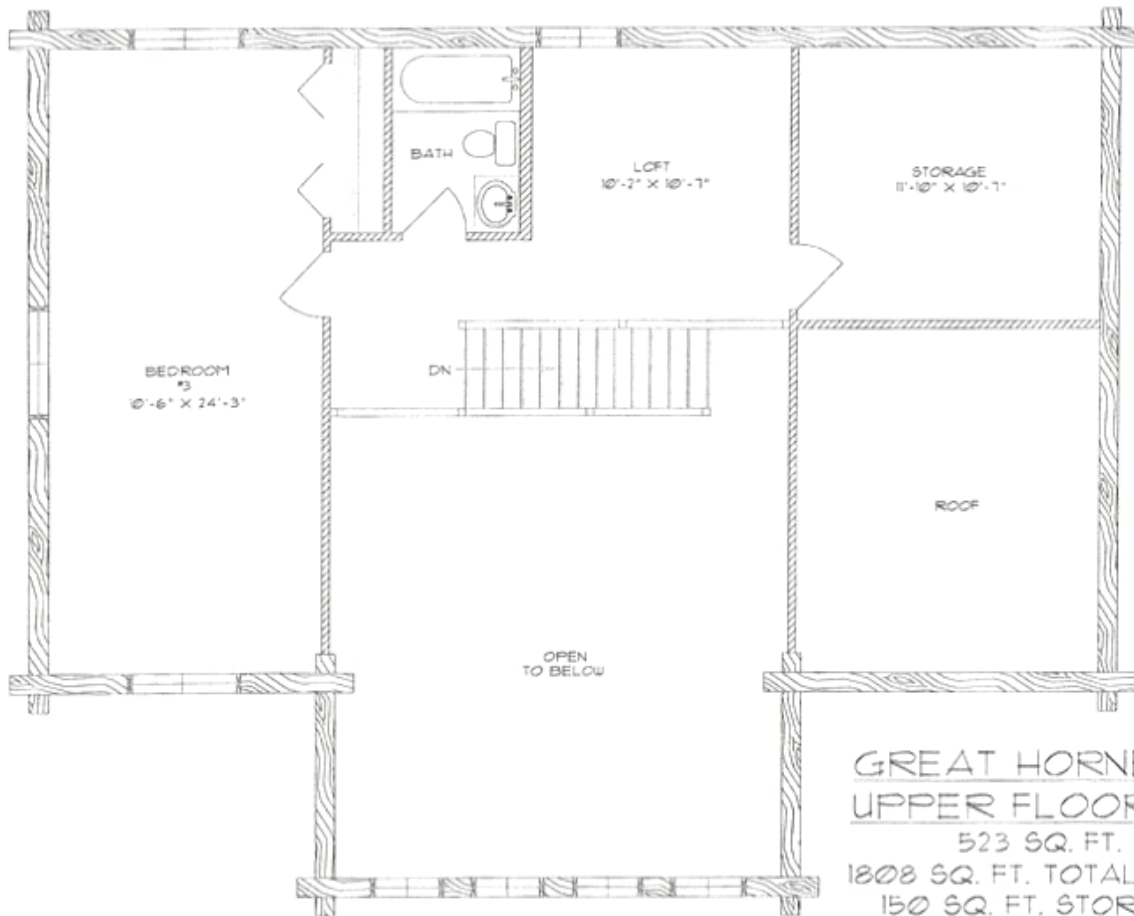
Model Name: Great Horned Owl
 1st Floor Sq. Ft.: 1280
 2nd Floor Sq. Ft.: 678
 Total Sq. Ft.: 1958
 Bedrooms: 3
 Bathrooms: 2.5

The luxurious floor plan of the Great Horned Owl incorporates a great room with an overlooking loft, a dining area with a bay window bump-out, and three bedrooms, possibly four, with three bathrooms. French doors open from both the dining area and master bedroom onto two covered porches, and a separate back entrance creates a space to leave skis or muddy boots.

Swedish Cope Style Logs					D-Style Logs	
7"	8"	9"	10"	12"	6" x 8"	8" x 8"
\$81,900.00	\$87,900.00	\$91,900.00	\$97,900.00	N/A	\$91,900.00	\$97,900.00



GREAT HORNED OWL
MAIN FLOOR PLAN
 1285 SQ. FT.
 1808 SQ. FT. TOTAL LIVING



GREAT HORNED OWL
UPPER FLOOR PLAN

523 SQ. FT.

1808 SQ. FT. TOTAL LIVING

150 SQ. FT. STORAGE