



Extreme Log Homes, LLC
 1820 O Rd.
 Fruita, CO 81521
 Phone: (970) 255-8116
 Email: info@extloghomes.com

Plan and Pricing Information for the Blackhawk III Model

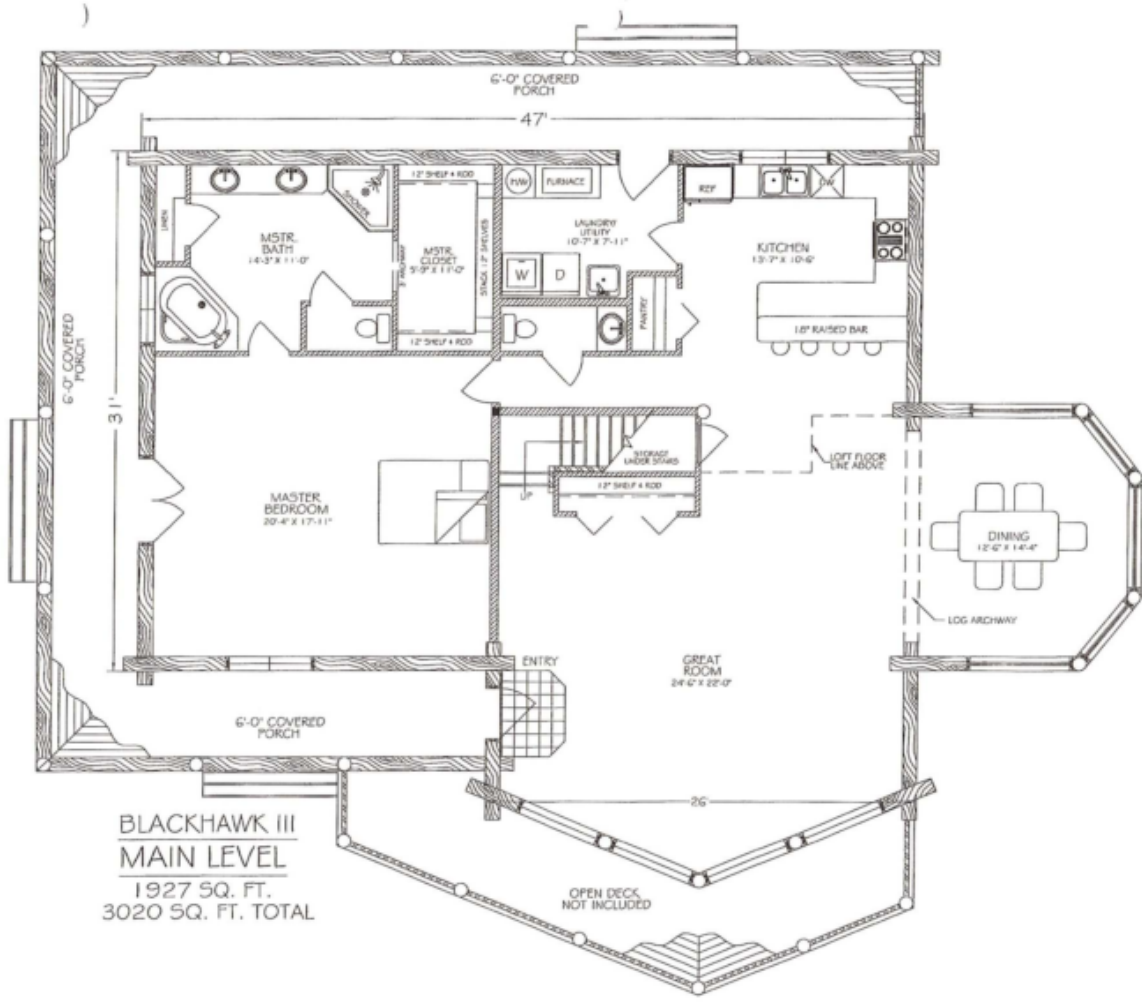


Model Specifications

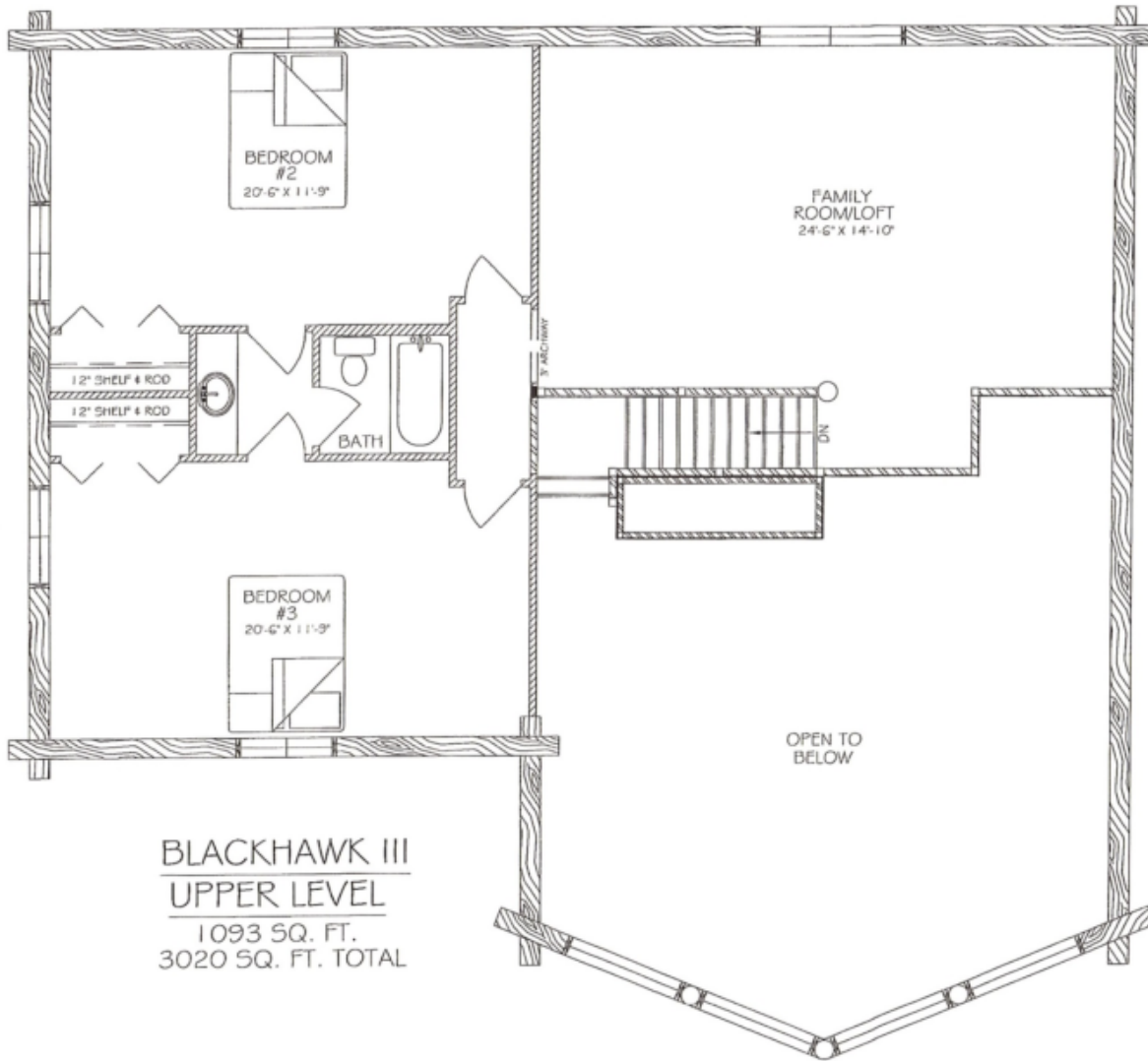
Model Name: Blackhawk III
 1st Floor Sq. Ft.: 1927
 2nd Floor Sq. Ft.: 1093
 Total Sq. Ft.: 3020
 Bedrooms: 3
 Bathrooms: 2.5

From any direction, you'll love the Black Hawk. With three bedrooms and two and a half bathrooms, the Black Hawk has the warm charm of a cabin, the spaciousness of a well-planned home, and the efficient space to improve any living style. The great room with its high vaulted ceilings and open loft area are accented by a log archway opening into a cozy dining room. The "turret" design of the dining room provides a surround of glass, allowing all to enjoy a natural retreat at those important family gatherings. The Black Hawk - a home that truly lives and looks spectacular in any setting.

Swedish Cope Style Logs					D-Style Logs	
7"	8"	9"	10"	12"	6" x 8"	8" x 8"
\$126,900.00	\$135,900.00	\$141,900.00	\$150,900.00	N/A	\$141,900.00	\$150,900.00



BLACKHAWK III
MAIN LEVEL
 1927 SQ. FT.
 3020 SQ. FT. TOTAL



BLACKHAWK III
UPPER LEVEL
 1093 SQ. FT.
 3020 SQ. FT. TOTAL