



Extreme Log Homes, LLC  
 1820 O Rd.  
 Fruita, CO 81521  
 Phone: (970) 255-8116  
 Email: info@extloghomes.com

**Plan and Pricing Information for the Blackhawk II Model**

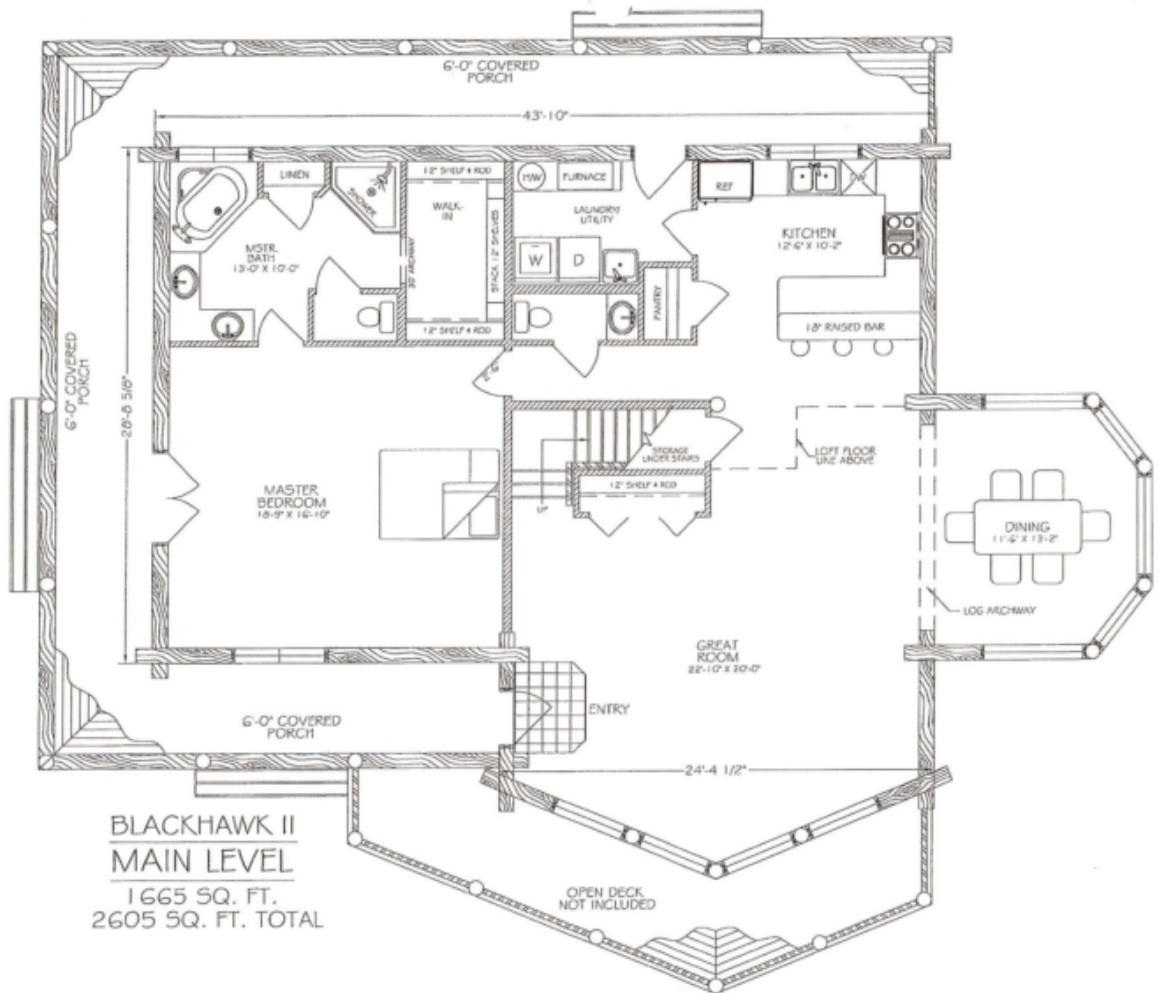


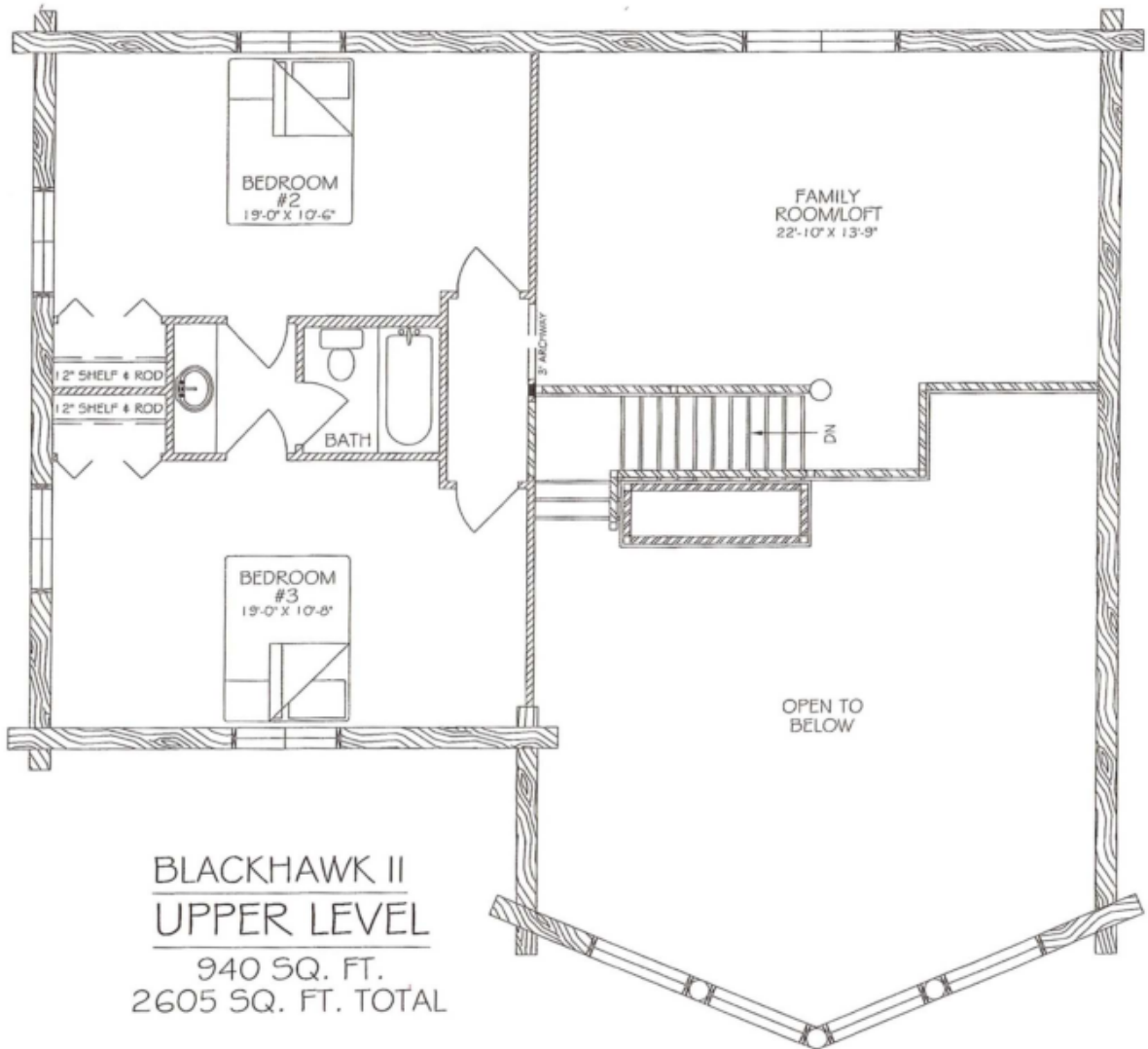
**Model Specifications**

Model Name: Blackhawk II  
 1st Floor Sq. Ft.: 1665  
 2nd Floor Sq. Ft: 940  
 Total Sq. Ft.: 2605  
 Bedrooms: 3  
 Bathrooms: 2.5

From any direction, you'll love the Black Hawk. With three bedrooms and two and a half bathrooms, the Black Hawk has the warm charm of a cabin, the spaciousness of a well-planned home, and the efficient space to improve any living style. The great room with high vaulted ceilings and open loft area are accented by a log archway opening into a cozy dining room. The "turret" design of the dining room provides a surround of glass, allowing all to enjoy a natural retreat at those important family gatherings. The Black Hawk - a home that truly lives and looks spectacular in any setting.

Swedish Cope Style Logs					D-Style Logs	
7"	8"	9"	10"	12"	6" x 8"	8" x 8"
\$108,900.00	\$116,900.00	\$121,900.00	\$129,900.00	N/A	\$121,900.00	\$129,900.00





**BLACKHAWK II**  
**UPPER LEVEL**  
 940 SQ. FT.  
 2605 SQ. FT. TOTAL