



Extreme Log Homes, LLC
 1820 O Rd.
 Fruita, CO 81521
 Phone: (970) 255-8116
 Email: info@extloghomes.com

Plan and Pricing Information for the Hawk Owl Model

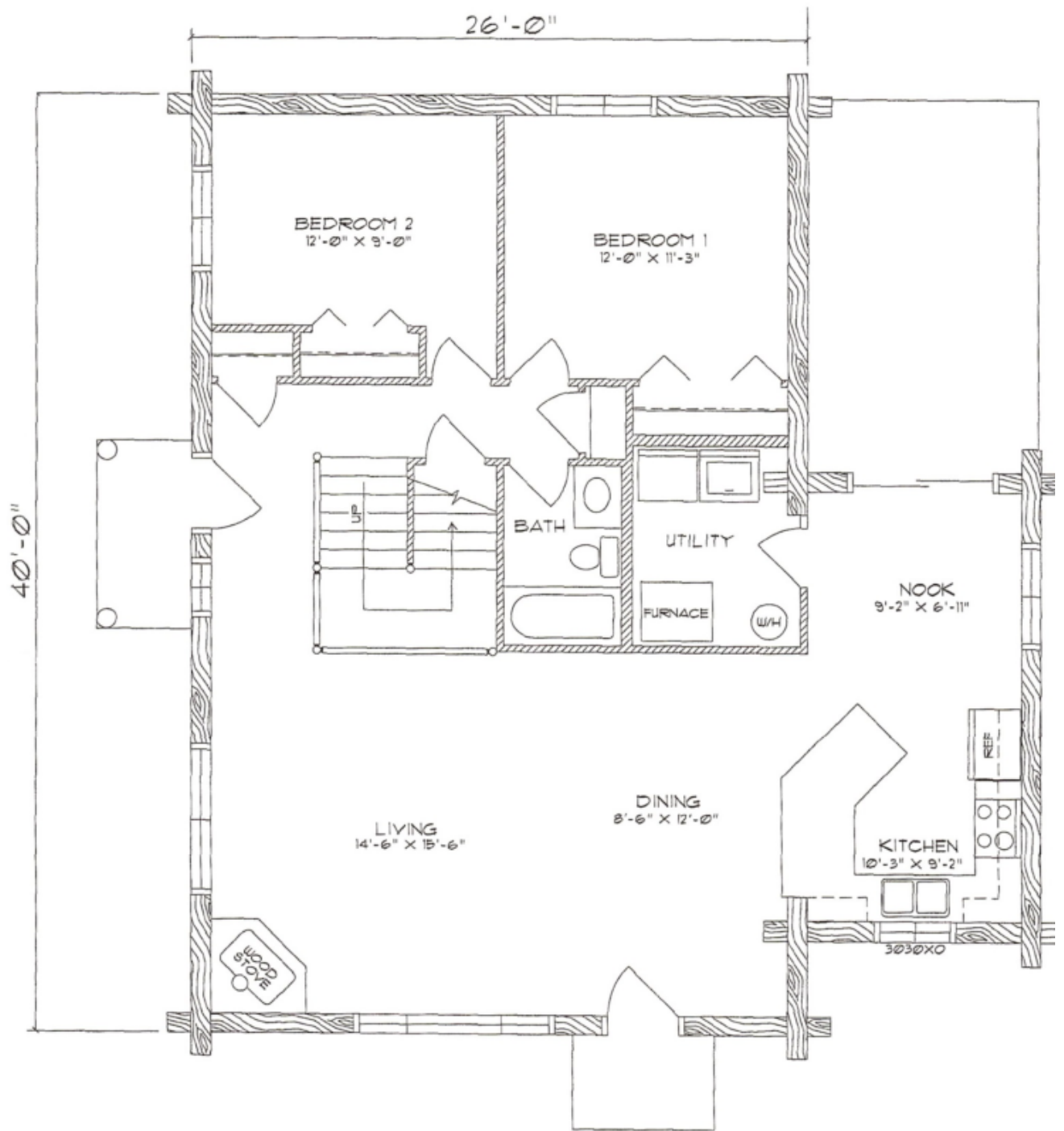


Model Specifications

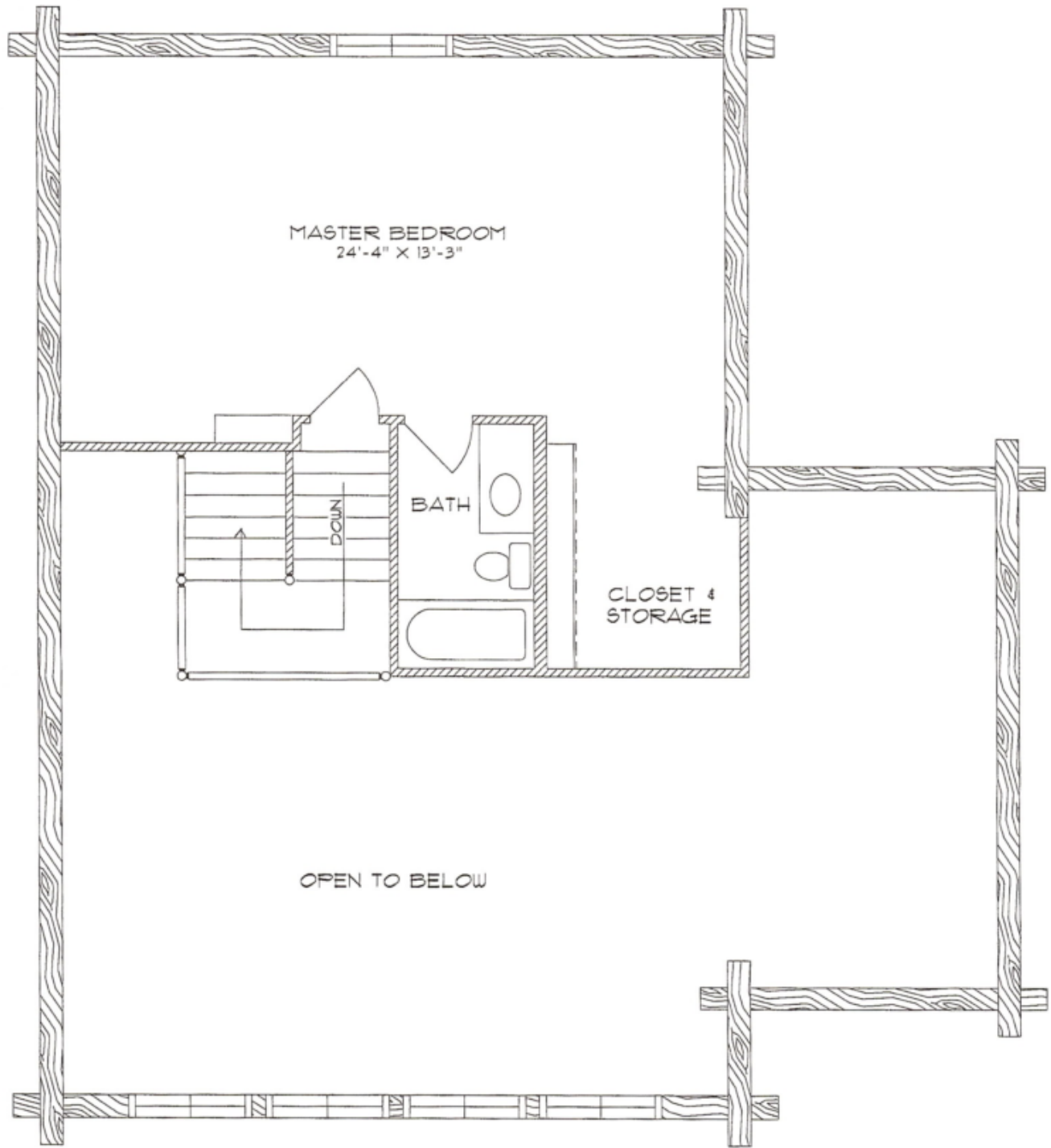
Model Name: Hawk Owl
 1st Floor Sq. Ft.: 1240
 2nd Floor Sq. Ft.: 510
 Total Sq. Ft.: 1750
 Bedrooms: 3
 Bathrooms: 2

The Hawk Owls bountiful design incorporates a side extension for the kitchen and breakfast nook along with a sliding door that opens out onto the back patio. The expansive living area is balanced with a vaulted ceiling and to top off the whole plan, the second floor is devoted to the master suite.

Swedish Cope Style Logs					D-Style Logs	
7"	8"	9"	10"	12"	6" x 8"	8" x 8"
\$69,900.00	\$74,900.00	\$78,900.00	\$83,900.00	N/A	\$78,900.00	\$83,900.00



HAWK OWL
 MAIN FLOOR
 1240 SQ. FT.
 1750 SQ. FT. TOTAL



MASTER BEDROOM
24'-4" X 13'-3"

BATH

CLOSET &
STORAGE

OPEN TO BELOW

HAWK OWL
LOFT FLOOR
510 SQ. FT.
1750 SQ. FT. TOTAL