



Extreme Log Homes, LLC
 1820 O Rd.
 Fruita, CO 81521
 Phone: (970) 255-8116
 Email: info@extloghomes.com

Plan and Pricing Information for the Short-eared Owl Model

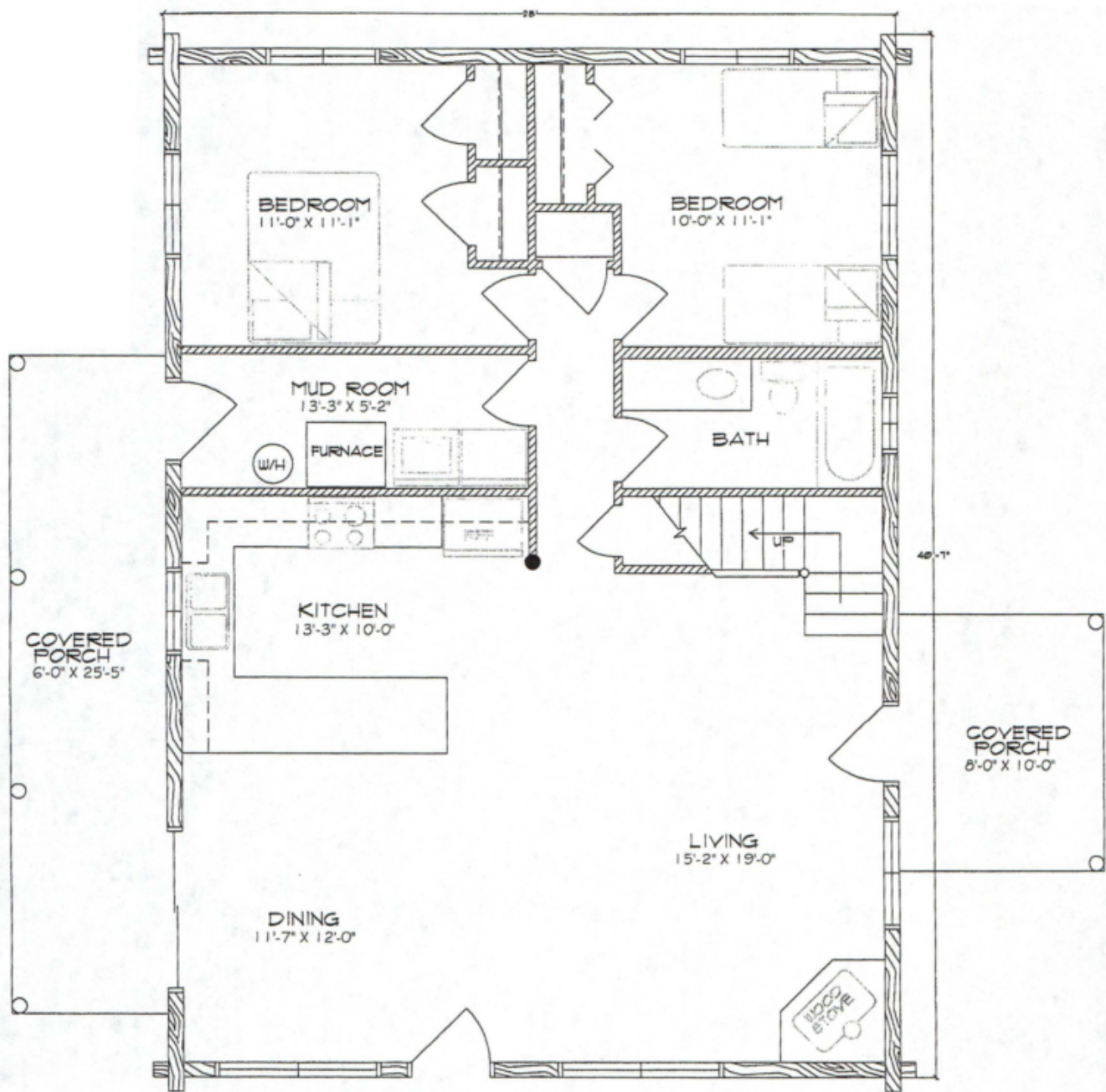


Model Specifications

Model Name: Short-eared Owl
 1st Floor Sq. Ft.: 1120
 2nd Floor Sq. Ft.: 541
 Total Sq. Ft.: 1661
 Bedrooms: 3
 Bathrooms: 2

The various roof lines and striking covered entryway endow the Short-eared Owl with personality. A primary bedroom upstairs has its own bath, and the open loft can be used as a sitting room or study. Additionally, two secondary bedrooms downstairs share a bath. Sliding doors lead out from the dining/living area to a covered deck, a spacious U-shaped kitchen and mud room with its own entrance finish the plan.

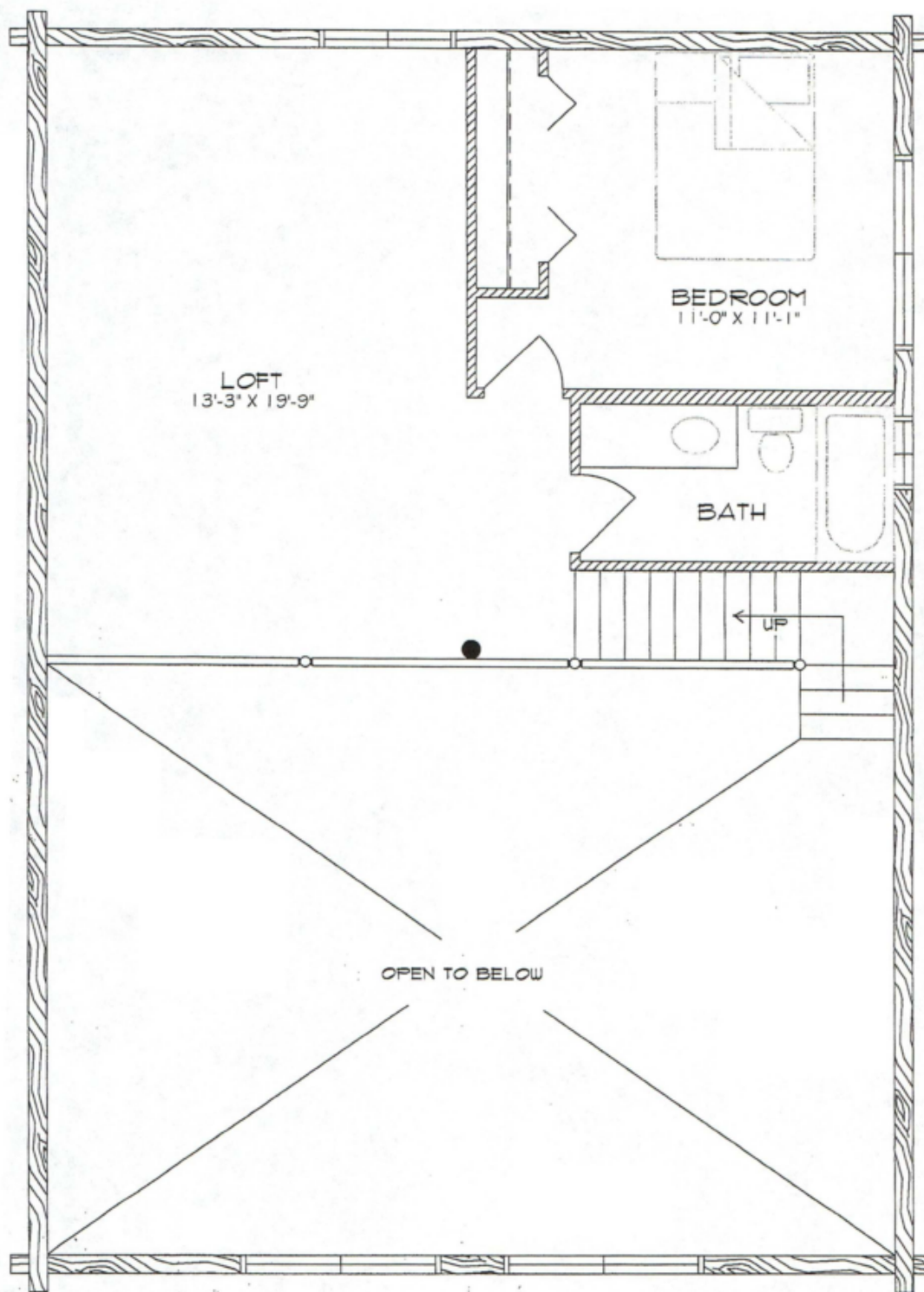
Swedish Cope Style Logs					D-Style Logs	
7"	8"	9"	10"	12"	6" x 8"	8" x 8"
\$69,900.00	\$74,900.00	\$77,900.00	\$82,900.00	N/A	\$77,900.00	\$82,900.00



SHORT-EARED OWL

MAIN FLOOR PLAN

1120 SQUARE FEET
1661 SQ. FT. TOTAL



SHORT-EARED OWL
LOFT FLOOR PLAN

541 SQUARE FEET
1661 SQ. FT. TOTAL