



Extreme Log Homes, LLC
 1820 O Rd.
 Fruita, CO 81521
 Phone: (970) 255-8116
 Email: info@extloghomes.com

Plan and Pricing Information for the Partridge Model

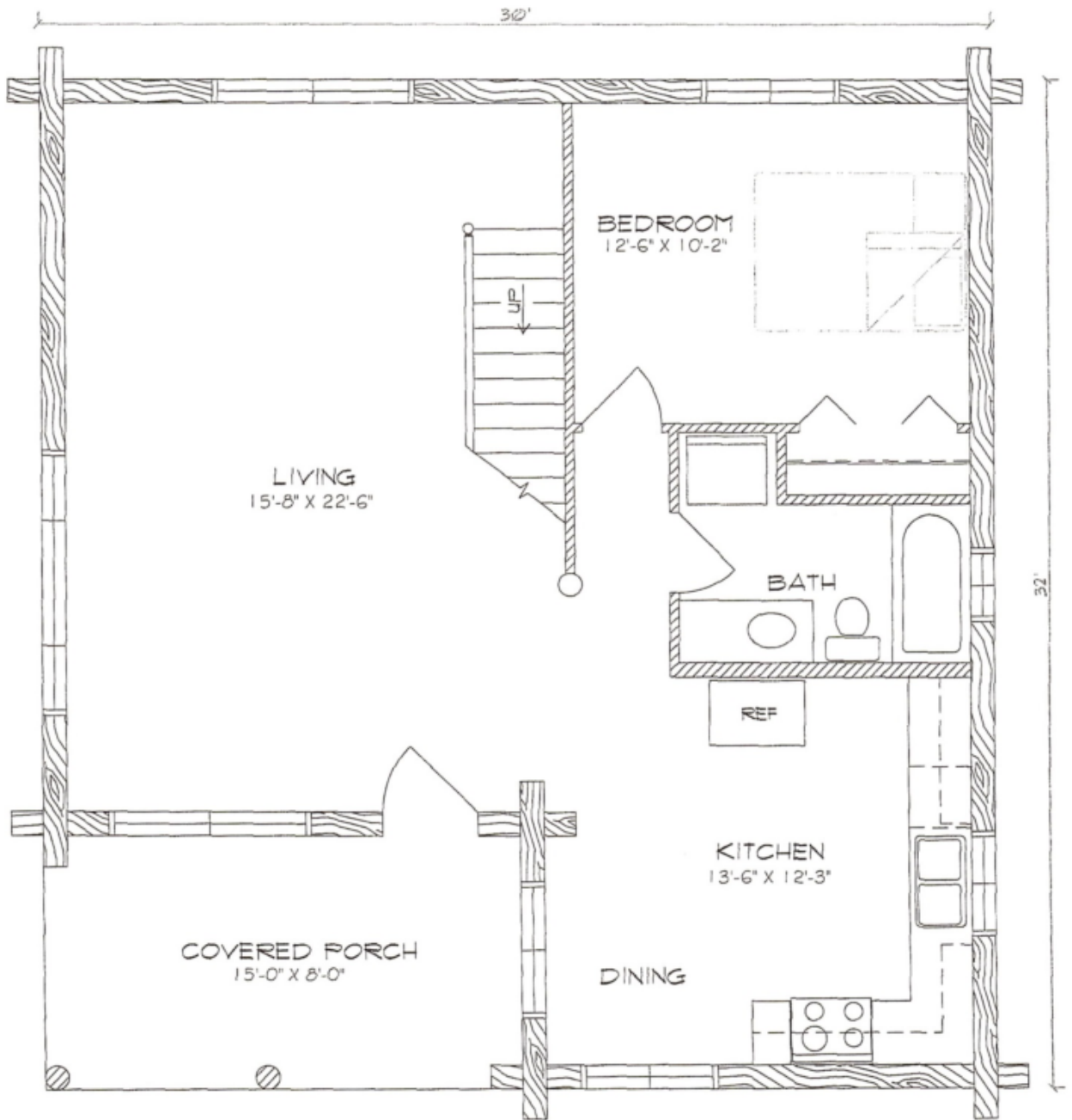


Model Specifications

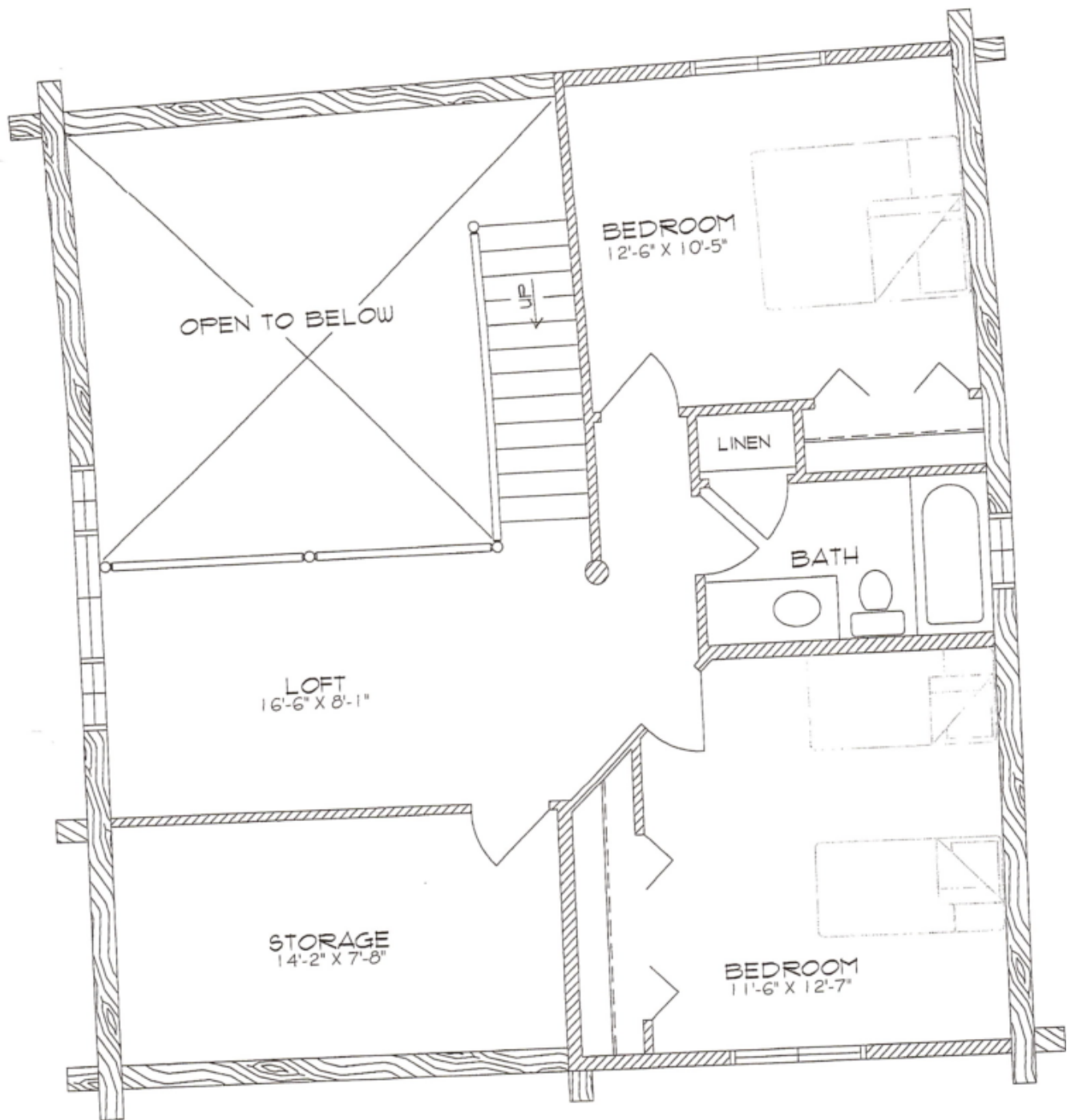
Model Name: Partridge
 1st Floor Sq. Ft.: 840
 2nd Floor Sq. Ft.: 710
 Total Sq. Ft.: 1550
 Bedrooms: 3
 Bathrooms: 2

The Partridge can be a wonderful family home or mountain cabin. It has three bedrooms, two baths, a loft and a traditional great room with a vaulted ceiling. The steeply pitched roof covers the front porch and is designed to shed heavy winter snows.

Swedish Cope Style Logs					D-Style Logs	
7"	8"	9"	10"	12"	6" x 8"	8" x 8"
\$67,900.00	\$72,900.00	\$75,900.00	\$80,900.00	N/A	\$75,900.00	\$80,900.00



PARTRIDGE
MAIN FLOOR PLAN
 840 SQUARE FEET
 1423 SQ. FT. TOTAL LIVING



PARTRIDGE
LOFT FLOOR PLAN
 583 SQUARE FEET
 1423 SQ. FT. TOTAL LIVING
 127 SQ. FT. STORAGE