



Extreme Log Homes, LLC
 1820 O Rd.
 Fruita, CO 81521
 Phone: (970) 255-8116
 Email: info@extloghomes.com

Plan and Pricing Information for the Oriole Model

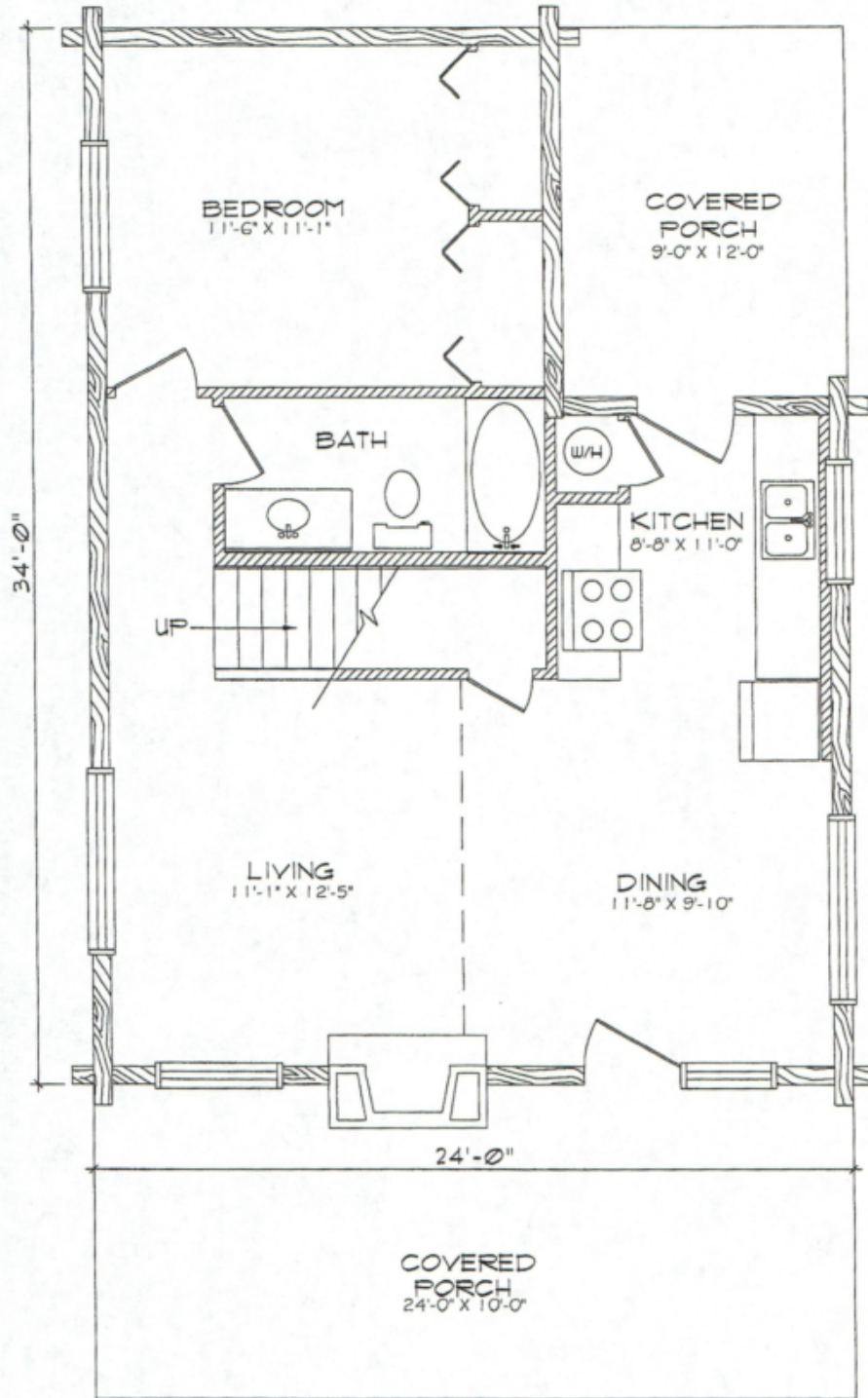


Model Specifications

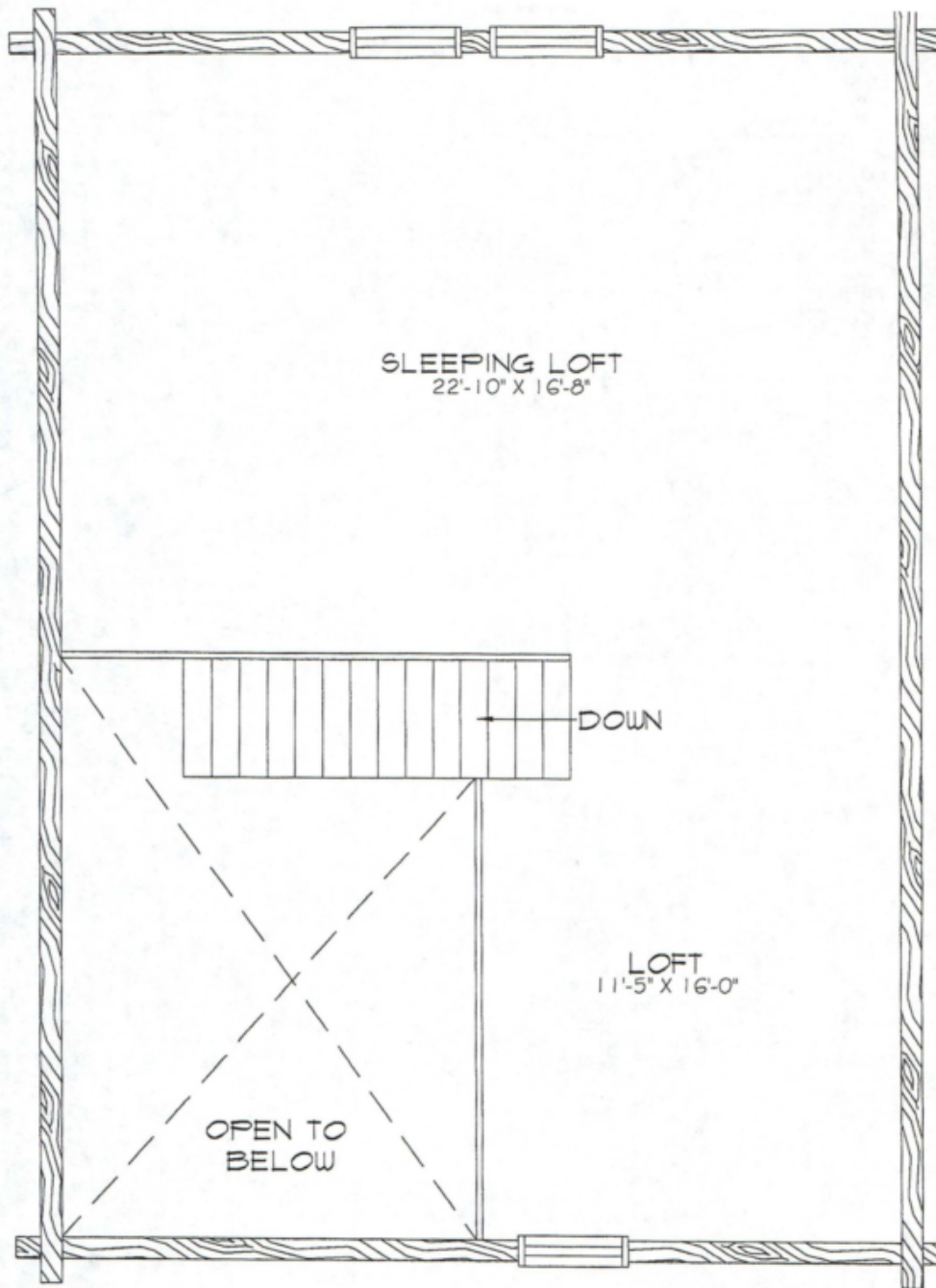
Model Name: Oriole
 1st Floor Sq. Ft.: 708
 2nd Floor Sq. Ft: 612
 Total Sq. Ft.: 1320
 Bedrooms: 1
 Bathrooms: 1

Enjoying the scenery will be easy from the front deck or back porch of the Oriole. A single bedroom and bath on the first level are enough for a young couple just starting out, or an older couple just starting their retirement. The 3/4 loft welcomes guests or grandchildren.

Swedish Cope Style Logs					D-Style Logs	
7"	8"	9"	10"	12"	6" x 8"	8" x 8"
\$54,900.00	\$58,900.00	\$61,900.00	\$65,900.00	N/A	\$61,900.00	\$65,900.00



ORIOLE
MAIN FLOOR PLAN
 708 SQ. FT.
 1320 SQ. FT. TOTAL



ORIOLE
LOFT FLOOR PLAN

612 SQ. FT.
1320 SQ. FT. TOTAL