



Extreme Log Homes, LLC  
 1820 O Rd.  
 Fruita, CO 81521  
 Phone: (970) 255-8116  
 Email: info@extloghomes.com

**Plan and Pricing Information for the Nightingale Model**

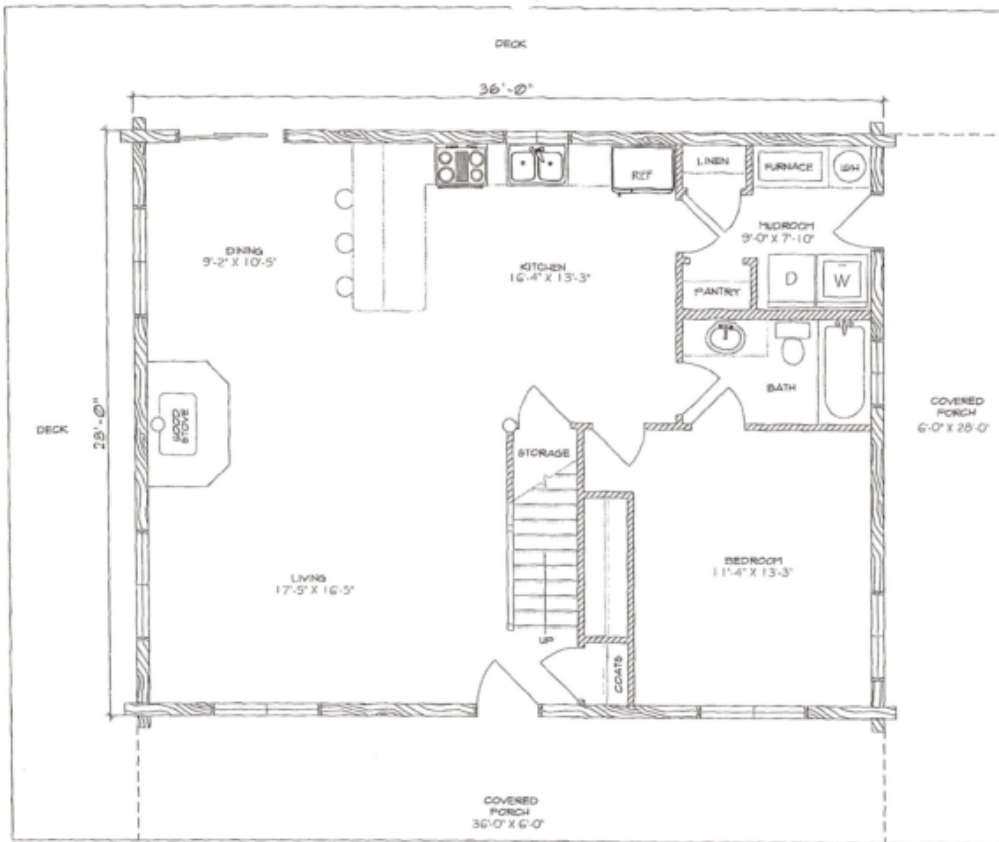


**Model Specifications**

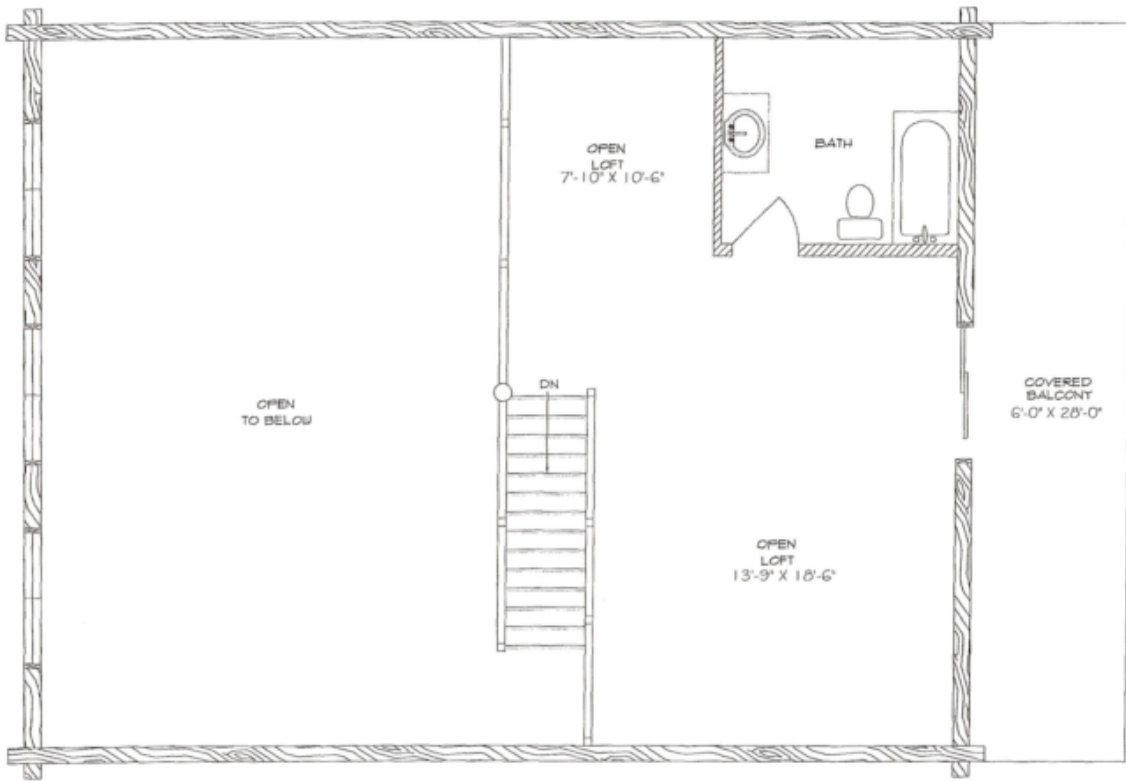
Model Name: Nightingale  
 1st Floor Sq. Ft.: 1008  
 2nd Floor Sq. Ft.: 457  
 Total Sq. Ft.: 1465  
 Bedrooms: 1  
 Bathrooms: 2

Perfect for a 360-degree view or a secluded spot in the forest, the Nightingale offers a full wrap-around deck, a second floor balcony and abundant windows. The inviting floor plan features a combined mud/utility room, one lower bedroom, two full baths and an open loft area that can be used as a master suite.

Swedish Cope Style Logs					D-Style Logs	
7"	8"	9"	10"	12"	6" x 8"	8" x 8"
\$60,900.00	\$65,900.00	\$68,900.00	\$72,900.00	N/A	\$68,900.00	\$72,900.00



NIGHTINGALE  
 MAIN FLOOR PLAN  
 1008 SQUARE FEET  
 1465 SQUARE FEET TOTAL



NIGHTINGALE  
LOFT FLOOR PLAN  
457 SQUARE FEET  
1465 SQUARE FEET TOTAL