



Extreme Log Homes, LLC
 1820 O Rd.
 Fruita, CO 81521
 Phone: (970) 255-8116
 Email: info@extloghomes.com

Plan and Pricing Information for the Teal Model

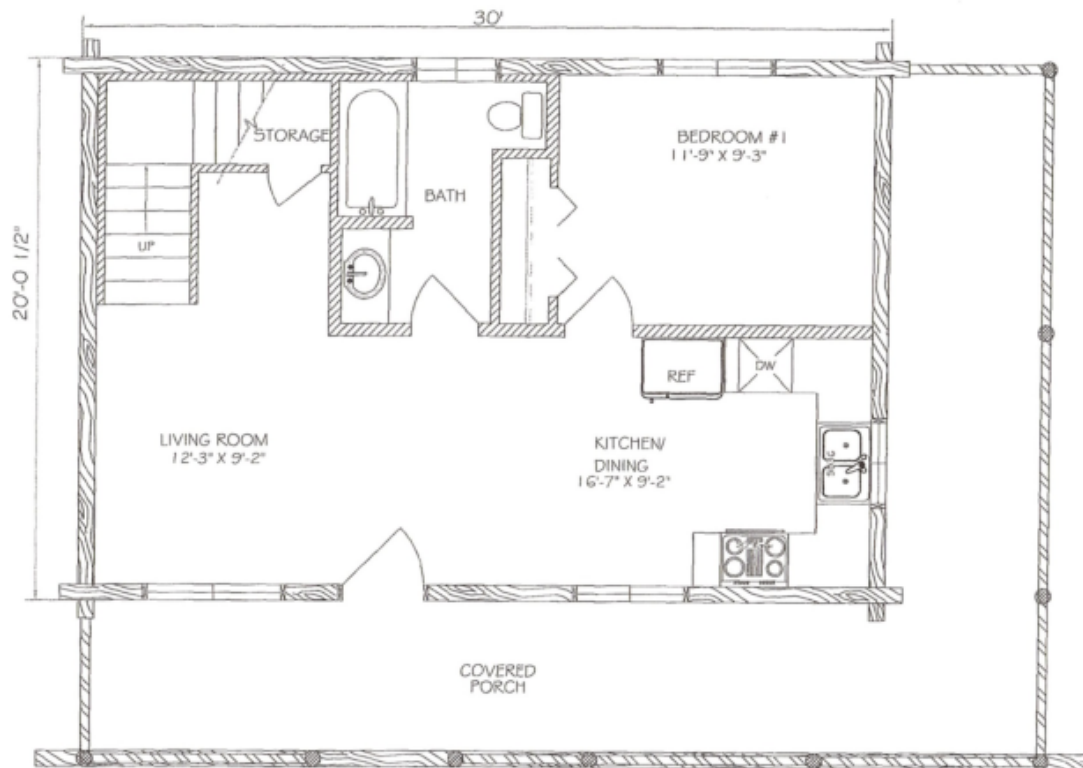


Model Specifications

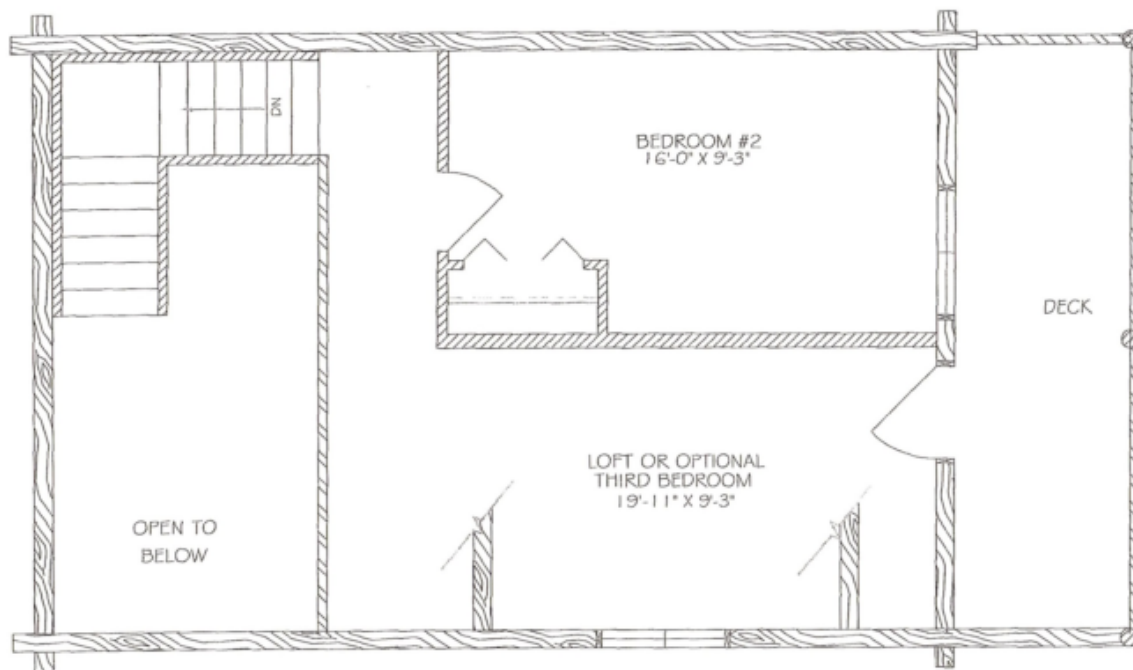
Model Name: Teal
 1st Floor Sq. Ft.: 600
 2nd Floor Sq. Ft.: 429
 Total Sq. Ft.: 1029
 Bedrooms: 2
 Bathrooms: 1

Clean lines and good proportions grant the Teal a timeless appeal. The covered porch extends across the entire front and along one side, with two bedrooms and an open loft area that could be enclosed for an optional third bedroom. Additionally a covered second-story deck offers a bird's-eye view of the surroundings. This log home makes a wonderful addition to any scenery.

Swedish Cope Style Logs					D-Style Logs	
7"	8"	9"	10"	12"	6" x 8"	8" x 8"
\$42,900.00	\$45,900.00	\$47,900.00	\$50,900.00	N/A	\$47,900.00	\$50,900.00



TEAL
MAIN FLOOR PLAN
600 SQ. FT.
1029 SQ. FT. TOTAL LIVING



TEAL
LOFT FLOOR PLAN
429 SQ. FT.
1029 SQ. FT. TOTAL LIVING