



Extreme Log Homes, LLC
 1820 O Rd.
 Fruita, CO 81521
 Phone: (970) 255-8116
 Email: info@extloghomes.com

Plan and Pricing Information for the Robin III Model

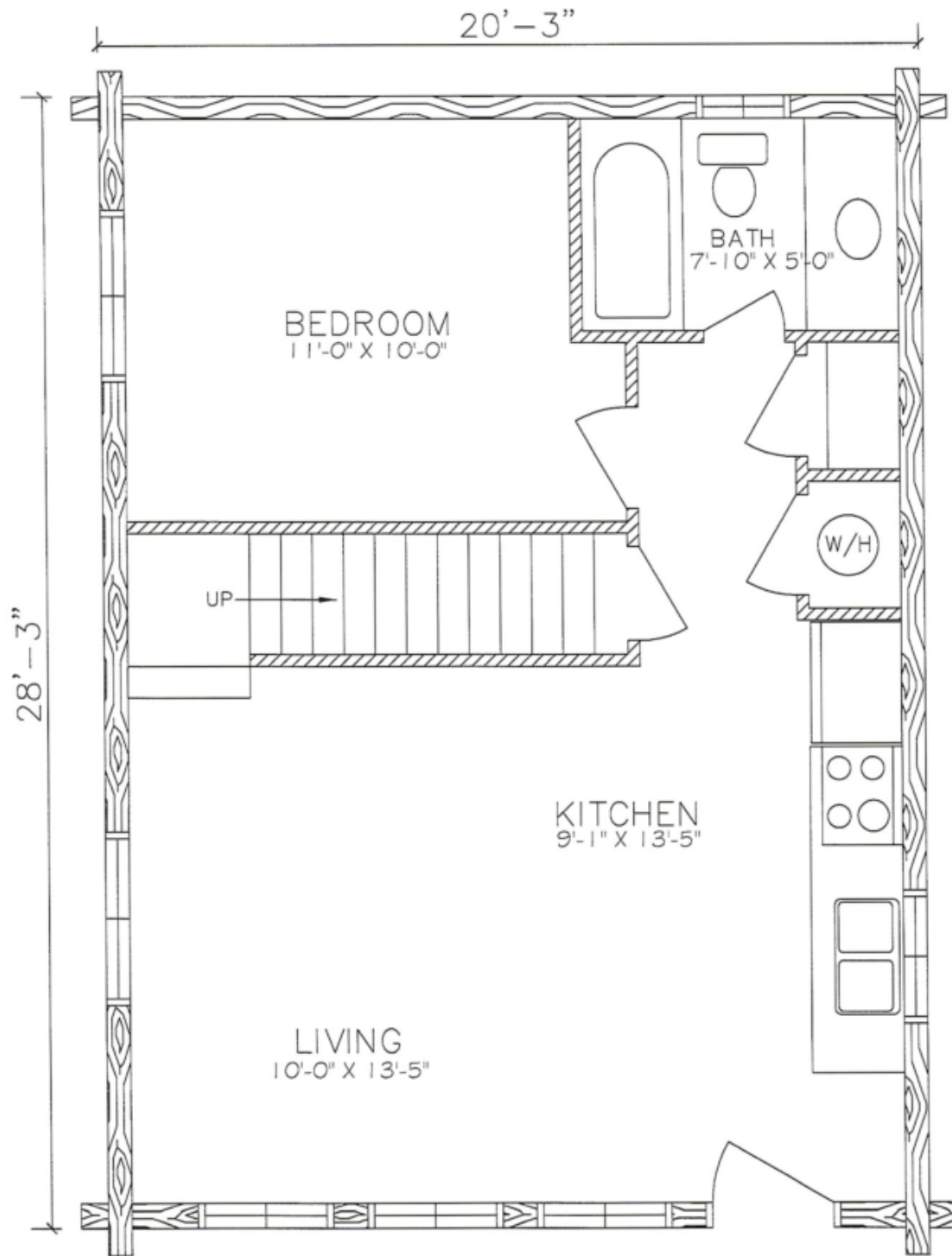


Model Specifications

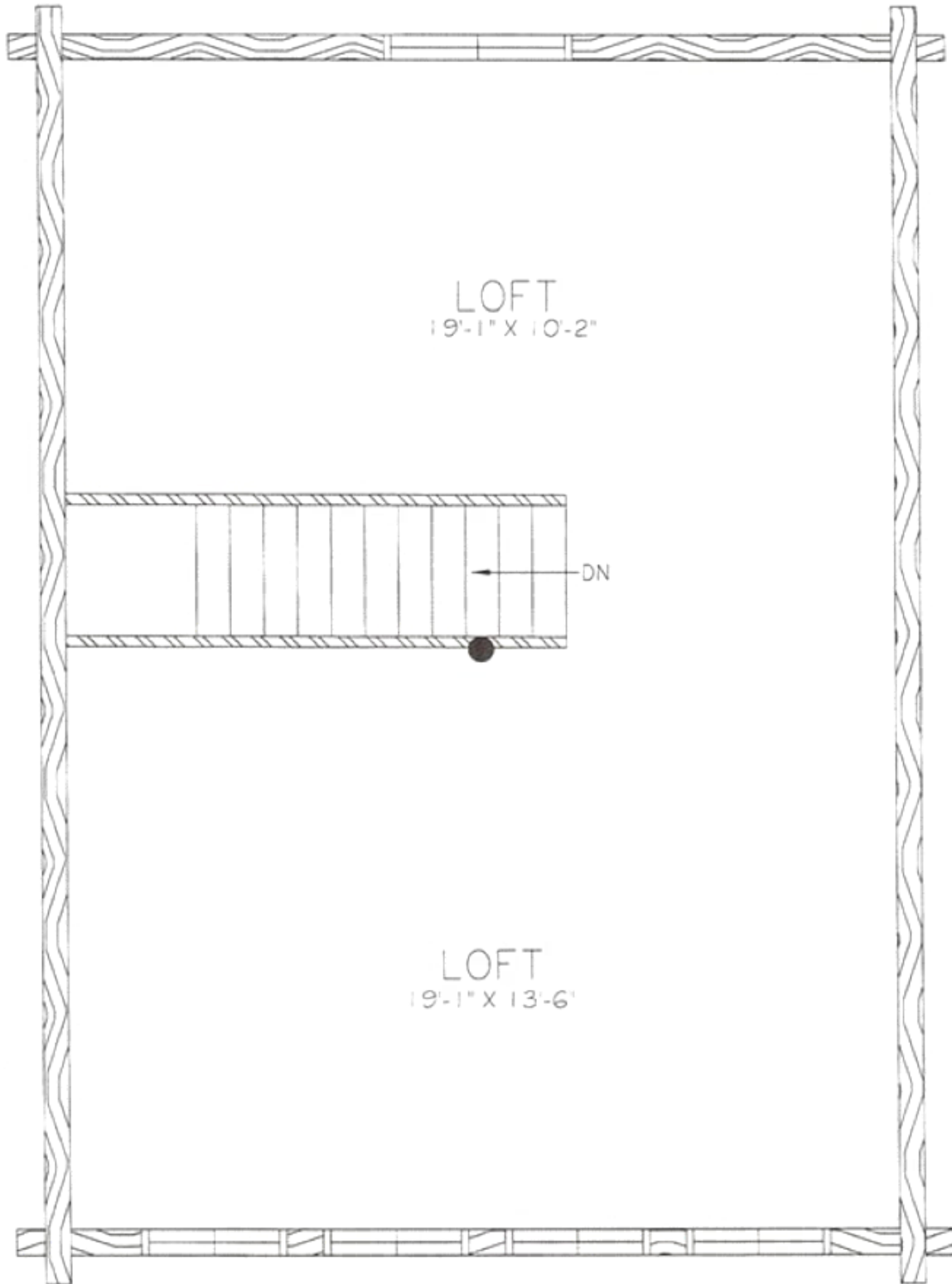
Model Name: Robin III
 1st Floor Sq. Ft.: 560
 2nd Floor Sq. Ft.: 560
 Total Sq. Ft.: 1120
 Bedrooms: 1
 Bathrooms: 1

Whether escaping for just the weekend or the rest of one's life, the Robin will fulfill the dream. It will fit in almost any spot, and the steeply pitched roof will keep the snow load down. There are also three floor plan options from which to choose to provide you with many different options to fit your needs.

Swedish Cope Style Logs					D-Style Logs	
7"	8"	9"	10"	12"	6" x 8"	8" x 8"
\$39,900.00	\$43,900.00	\$45,900.00	\$48,900.00	N/A	\$45,900.00	\$48,900.00



ROBIN II AND III
 MAIN FLOOR PLAN
 572 SQ. FT.



"B" LOFT PLAN
536 SQ. FT.