



Extreme Log Homes, LLC  
 1820 O Rd.  
 Fruita, CO 81521  
 Phone: (970) 255-8116  
 Email: info@extloghomes.com

## Plan and Pricing Information for the Finch Model

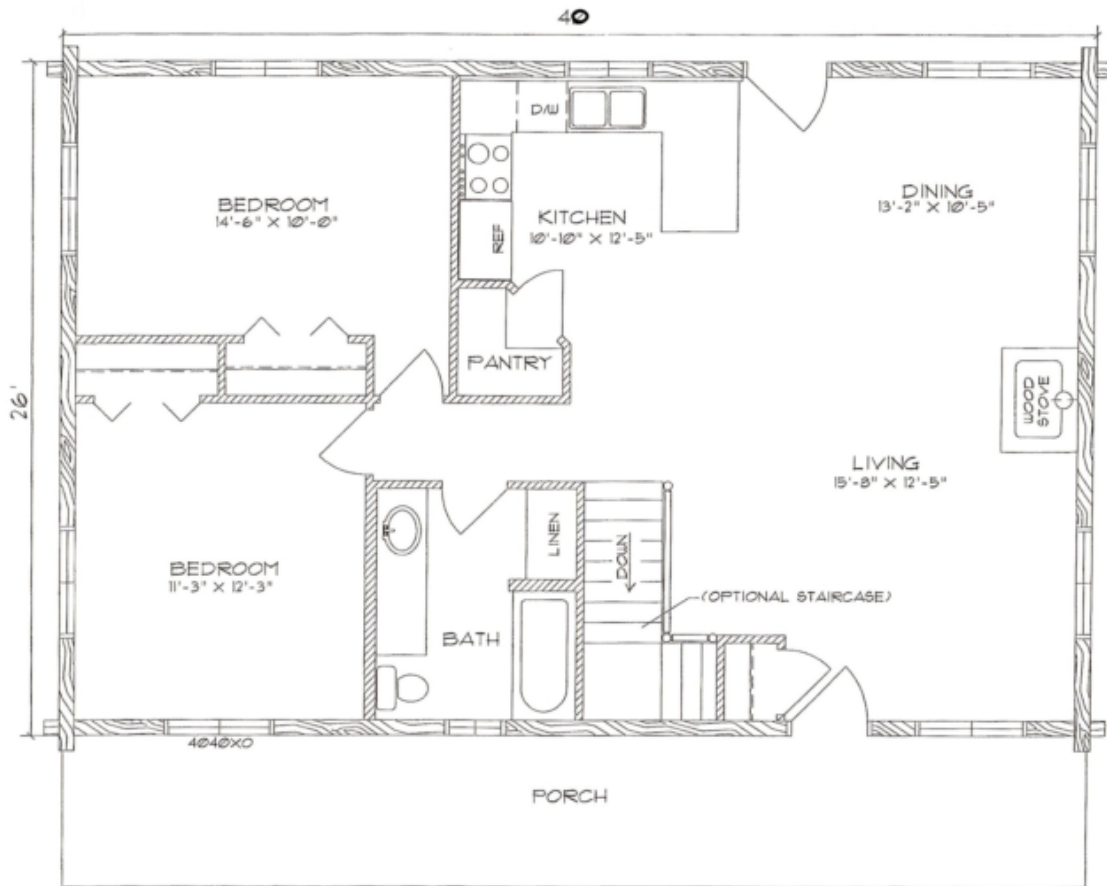


### Model Specifications

Model Name: Finch  
 1st Floor Sq. Ft.: 1040  
 Total Sq. Ft.: 1040  
 Bedrooms: 2  
 Bathrooms: 1

The Finch is best described as humble, but it is designed with the "do-it-yourselfer" in mind. The shell is easy to put up, and the plan is basic enough to make finishing this home a snap. Add on a basement finish and you have yourself an additional 1,040 square feet.

Swedish Cope Style Logs					D-Style Logs	
7"	8"	9"	10"	12"	6" x 8"	8" x 8"
\$39,900.00	\$42,900.00	\$44,900.00	\$47,900.00	N/A	\$44,900.00	\$47,900.00



FINCH  
 FLOOR PLAN  
 1040 SQ. FT.