



Extreme Log Homes, LLC
 1820 O Rd.
 Fruita, CO 81521
 Phone: (970) 255-8116
 Email: info@extloghomes.com

Plan and Pricing Information for the Barn Owl Model

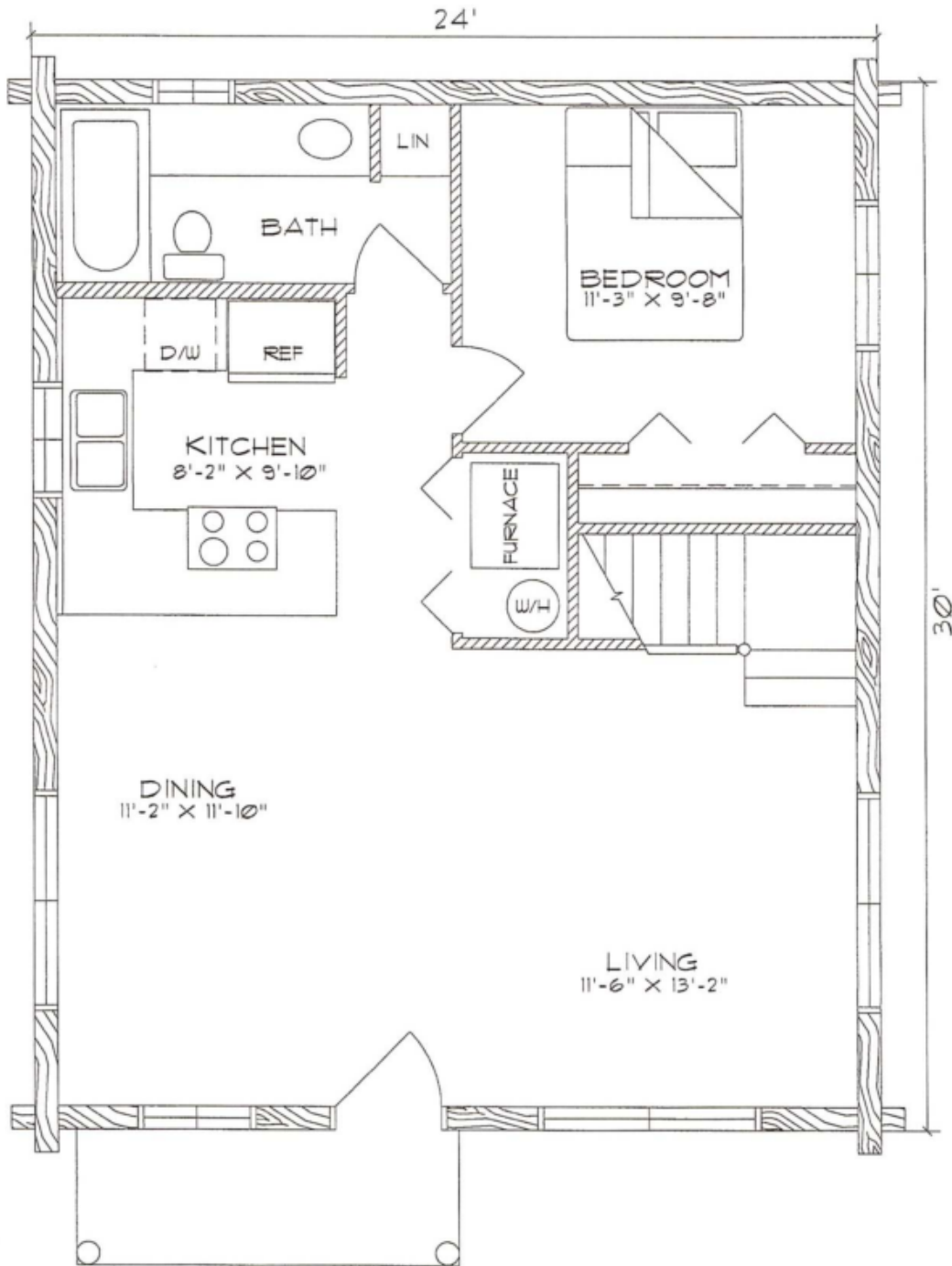


Model Specifications

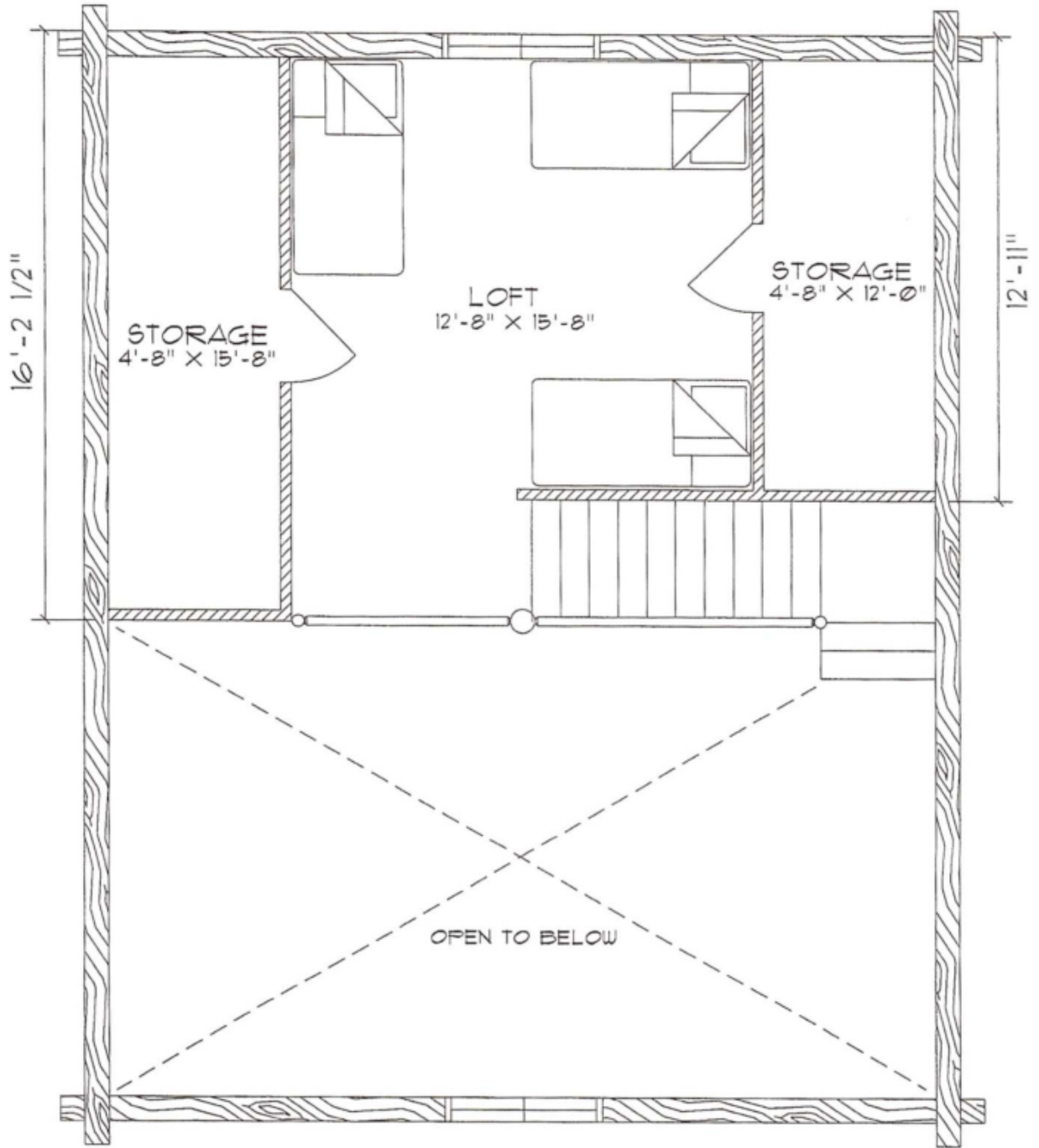
Model Name: Barn Owl
 1st Floor Sq. Ft.: 720
 2nd Floor Sq. Ft.: 350
 Total Sq. Ft.: 1070
 Bedrooms: 1
 Bathrooms: 1

At home in a pasture or deciduous thicket, the Barn Owl is poised to be a best-seller. The efficient floor plan leaves a small footprint on the landscape while preserving adequate living space. This home gains another 720 square feet if placed over a basement foundation.

Swedish Cope Style Logs					D-Style Logs	
7"	8"	9"	10"	12"	6" x 8"	8" x 8"
\$30,900.00	\$43,900.00	\$45,900.00	\$48,900.00	N/A	\$45,900.00	\$48,900.00



BARN OWL
MAIN FLOOR PLAN
 720 SQ. FT.
 905 SQ. FT. TOTAL LIVING



BARN OWL
LOFT FLOOR PLAN
 185 SQ. FT.
 905 SQ. FT. TOTAL LIVING
 165 SQ. FT. STORAGE