



Extreme Log Homes, LLC
 1820 O Rd.
 Fruita, CO 81521
 Phone: (970) 255-8116
 Email: info@extloghomes.com

Plan and Pricing Information for the Prairie Falcon III Model

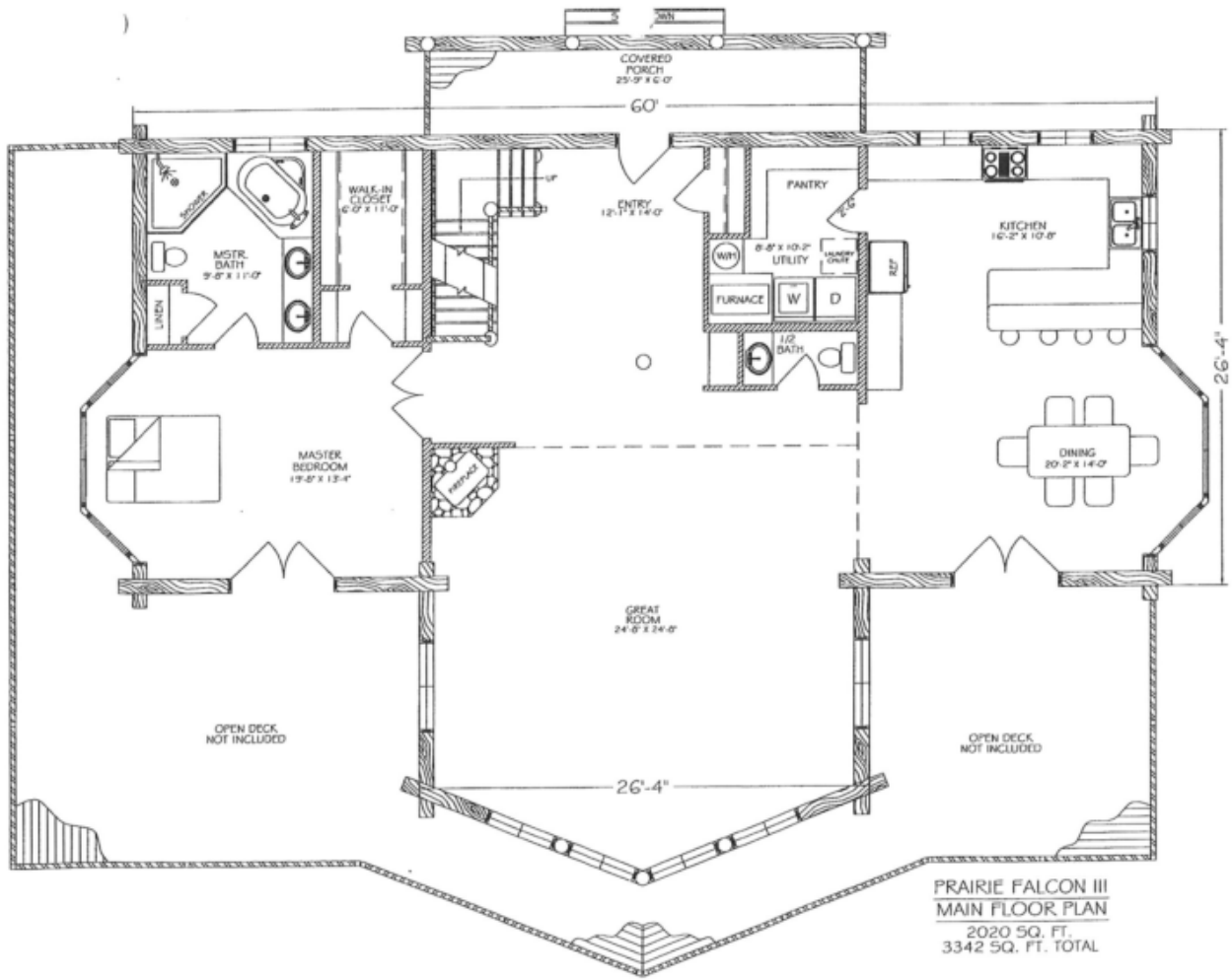


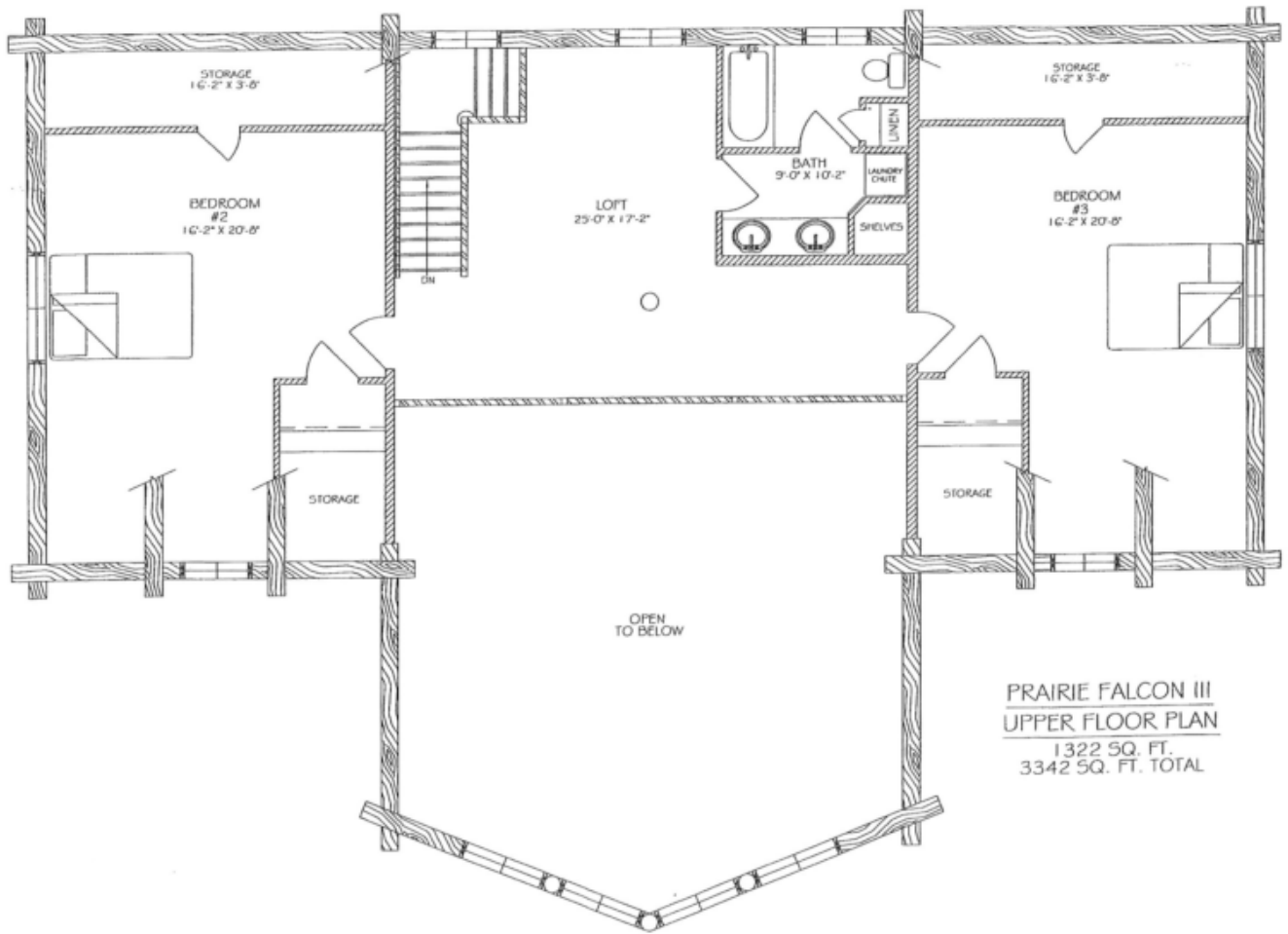
Model Specifications

Model Name: Prairie Falcon III
 1st Floor Sq. Ft.: 2020
 2nd Floor Sq. Ft.: 1322
 Total Sq. Ft.: 3342
 Bedrooms: 3
 Bathrooms: 2.5

The Prairie Falcon III was designed to take full advantage of a grassy knoll overlooking a serene valley. The great room's high vaulted ceiling creates sky bound magnificence enhanced by the large front prow. Two walls of windows enhance the view from inside, and scream curb appeal to on-lookers. The entrance is from the rear of the home, allowing full recreational use of the front deck. This will become a "welcome home"!

Swedish Cope Style Logs					D-Style Logs	
7"	8"	9"	10"	12"	6" x 8"	8" x 8"
\$139,900.00	\$149,900.00	\$156,900.00	\$166,900.00	N/A	\$156,900.00	\$166,900.00





PRAIRIE FALCON III
UPPER FLOOR PLAN
1322 SQ. FT.
3342 SQ. FT. TOTAL